



BRIDGE

December 2022/ January 2023

**Wishing all our readers a very
Merry Christmas and a Happy New Year**

Newsletter of the parish of Middleham with Coverdale,
East Witton & Thornton Steward

Bridge over River Cover by Liz Sheehan

To sign up for e-Bridge please email jervaulxliz@gmail.com

Letter from the Rectory – Rev Liz

I'm gearing up to writing one of those 'round robin' Christmas letters to include in the annual round of Christmas card writing. I used to hate them and would chuck any I received in the bin unread. (I know, terrible!) Then I realised that I didn't want to miss out on any news so started reading them again. I try to keep ours short with a picture where neither me nor Jeff, but particularly me, look too



haggard. Then we come to the content. From the ones I've received over the years, they can range from the detailed ('we finally changed the carpet in the back bedroom – we went to four different carpet shops before deciding which one to get – what a palaver, and you know how difficult it is to park sometimes – etc etc etc') to the triumphalist ('my granddaughter has been studying Quantum Physics and LOVES it – amazing considering she'll only be 2 in February!)

to the ones where I don't know whether to be jealous or aspirational or what: (We've spent practically the whole year on holiday – beaches on the Med, trekking in Peru – etc etc amazing! 😊)

To be fair, sometimes people do write of difficulties and are honest about the good, bad and plain boring. Sometimes life is just horrible and people may indeed have an 'annus horribilus' as our late queen described 1992.

I'm imagining Mary and Joseph's round robin, the year following the birth of Jesus.

Hi everyone,

Hope you've had a good year. What a whirlwind we've had here – you won't believe it. No, honestly, you really won't. Angels (OH YES) and a visitation from kings (WE KID YOU NOT). And that's just for starters.

But the big news – is that we have a SON. I know you'll be thinking we were quick out of the traps – and wondering how come he was born before we were married – I know, the shame of it – but all I can say is it was a miracle of God. Not that I felt it was very miraculous when I was giving birth in a stable and the poor baby had to sleep in the animal feeding trough. (Yes, really!) We'd love to explain more when we see you – but it might be a while. In fact, we're hoping this letter gets to you as we're currently in Egypt – refugees, can you believe – but that's another story. Well, God has a plan, I'm sure, and we just keep trying to trust – but it's been a challenge, I can tell you. We'd like to hear your news too some time.

With our love, Mary, Joseph, and Jesus xxx

I guess what I take from this is that life is messy – and God's son was given no immunity from it. So maybe there's no shame in a Round Robin that shows a less than perfect life. Anyway, I'll endeavour to keep ours brief this year, and not expand too much on my spinach-growing!

Verse of the month(s): John 3¹⁷ 'Indeed, God did not send the Son into the world to condemn the world, but in order that the world might be saved through him.'

OPEN PANTRY

If you are in need of food bags please contact -
text/ phone 07796 988302
Or pm Lorna Skelton on Middleham Residents
Facebook page. All Confidential.

Food Contributions: There is a collection box in St Alkelda's, Middleham, if you are able to contribute an item or items of food for those in food need. Please leave them in the box at the back on the left as you go in. The doors are open daylight hours.

Thank you so much to those of you who have made contributions. If you can donate 'just one thing' each week or month that would add to the collection available for those who need it.



Rural Outreach Information and Advice Bus

Citizens Advice will be at Middleham Key Centre on certain Thursdays 12.00 – 13.30

- 8th December
We provide free, independent and



impartial information and advice on the following matters:

Benefits; work; debt and money; consumer matters; family matters; housing; law and courts; immigration; and health

HELPLINE: Citizens Advice Money & Benefits Advice Service, N Yorks

Call 0300 3031 598 Monday to Friday 9.00 to 4.00

Email advice can be requested via the contact form on website cany.org.uk

Extra Legal Help for North Yorkshire Residents ... for those who need it to solve problems in their everyday lives, and support for those representing themselves in court. Help with issues around housing, family and discrimination.

Office Opening times

Northallerton Mon & Thur 10 – 2pm Hambleton: 277 High St DL7 8DW. Tel: 01609 776551

Richmond Tuesday 10.00 – 14.00 Richmondshire: 23 Newbiggin DL10 4DX. 01748 823862

www.citizensadvicehrs.org.uk

Warm & Well in North Yorkshire

Who is eligible for help? Anyone who is unable to afford their energy bills or worried about heating their home. People on low incomes or benefits Families with young children. Anyone with physical or mental health issues. **Phone 01609 767555**

<https://www.warmandwell.org.uk/>

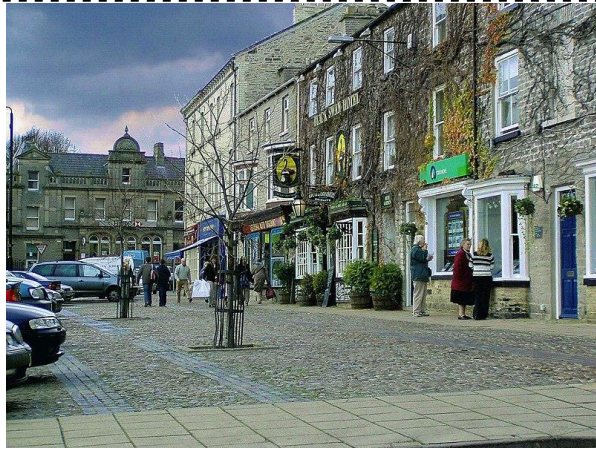
Middleham News

WIMS – Women in Middleham

Tuesday December 13th at 7pm in the Key Centre, Middleham, in the Lady Anne Neville Room, where we will be entertained by the Ukelele Group, followed by a Bring and Share tea.

NO meeting in January, BUT on Friday 20th January we will hold our yearly lunch for members and guests at the Queens Head, Finghall.

For further details ring Liz Stocker on 01969 625260 HAPPY CHRISTMAS TO ALL MEMBERS



MIDDLEHAM & THE DALES LOCAL HISTORY GROUP

Middleham Key Centre, Tues 17 Jan 2023 at 2.00pm

If you are interested in history make a New Year resolution to join the Middleham and the Dales Local History Group.

Our 2023 programme of talks will include topics such as Carving the Statue of the Queen for York Minster; the Middleham Jewel; the Wynard Estate and family; and the Yorkshire Dialect Project. In the summer we

arrange a visit for our Members' Day.

Join us at our AGM which will be followed by a short talk by **Marjorie Iveson** on **'Leyburn and how it became what it is today.'** (Photo above, Leyburn, 2004.)

Visitors are always welcome, or why not become a member for only £12 for 9 meetings; visitors can attend for £3 per meeting.

For more information contact Tony Keates 01969 640436, dotandtonyk@btinternet.com

COFFEE & CHRISTMAS CAKE

SUNDAY 4TH DECEMBER 2022

2PM - 4PM

42 PARK LANE

MIDDLEHAM



Join us for some Festive Fayre, Christmas Carols and Seasonal Joy.



Proceeds in aid of
Leyburn Guides Summer Expedition to

Switzerland



Tea and coffee,
homemade Christmas cake
& mince pies.
Sweet treats.
Tombola.

St.Mary & St. Alkelda's Church, Middleham

A huge **THANK YOU** to everyone who donated clothes and other goods, cakes, and who helped, or came along to our afternoon of **Tea and Cake and Preloved Clothes Pop Up shop** to raise funds for the Yorkshire Air Ambulance and St Alkelda's church.

Here are a few photographs of the day.



Left: Looking for a bargain?



Right: Get the kettle on!



Left: Enjoying cake

Below:
Rupert and Sally say, 'Yes, please, Rosemary!'



Right:

Kathy and some of the younger members of our communities building a cosy hedgehog hotel in the



churchyard. We hope it provides a home for one of these delightful creatures.

All Gardens Great and Small June 18th 2023



It may be cold and wet outside right now, your garden may be looking dull and lifeless but in six months' time it will be summer, the weather will have improved, birds will be singing and the gardens should be full of colour. Sunday June 18th is the date that has been chosen, (provisionally), for the Middleham Open Gardens and Allotments day. We are also making plans for a garden themed display made by Middleham children in the church. A few people already have kindly agreed to open their gardens, but not enough yet to make it a viable day. If you would like to participate in this church fund raiser by opening your garden, or helping in some way, please email me, jonwatkins202@outlook.com (*Jonathan's photo above*)



The Future of Bridge

Editor

Our new editor will take over in February 2023. We are delighted that Ruth has offered to edit Bridge for an initial period of 6 months and then we'll take it from there.....

On line Bridge

Bridge is now only available on line: either by email (please request at jervaulxliz@gmail.com) or access it via the Middleham Town Council website, or the parish website.)

Please consider printing out a copy for anyone you know who finds accessing technology difficult.

Middleham Key Centre

Park Lane, Middleham DL8 4RA 01969 624002

Email: office@middleham-key.co.uk

www.middlehamkeycentre.co.uk



December 2022 & January 2023

We are an information point & have a selection of brochures for the surrounding area, including bus timetables. We have recycling boxes, blue bags available and green gardening bags for sale. Office opening hours: Monday 10.00am – 12noon & Thursday 10.00am – 2.00pm.



Santa's Grotto: Saturday 10th December 2.00pm – 4.00pm.
All children aged 9 and under, living in Middleham are invited.
There will be a present from Santa, a Bouncy Castle, party food & Crafts.
Please text Sue Fairhurst on 07896 321348 to book your child's place.

Middleham Antiques at the Cubby Hole: Ring Angela for further details 07917 571180

Yoga Class: Tuesdays at 6.30pm – 8.00pm, last session before Christmas break is 13th December, returning on 10th January.

'T' in the Afternoon: Wednesdays 2.00pm – 3.30pm in the Garden room. Breaking up on 14th December returning on 11th January. All welcome and bring a craft if you wish.

Coffee Mornings: On Saturdays in The Garden room 10.30am – 12noon. Last coffee morning will be 17th December returning on 7th January. Everyone welcome.

Middleham Quilters: Every Monday 11.00am – 2.30pm. Last session 5th December, returning 9th January. Welcomes new members.

Over 60s Luncheon Club: Every Thursday at 12noon, price £7.00.

Ring 01969 624002 to book or inform us you can't attend.

Christmas Lunch on 15th December. Returning on Thursday 5th January 2023

Citizens Advice Pop-up Desk: usually here on Thursday 8th December - 12.30pm to 2.00pm in the Foyer.

Women in Middleham AGM: Tuesday 13th December at 7.00pm in Lady Anne Neville room.

For further details ring Liz Stocker on 01969 625260

Antique & Collectors' Fair: Sunday 29th January from 10.00am – 4.00pm

Refreshments available.

Middleham Town Council: The next Council meetings are on Wednesday 14th December.

Email: office@middlehamtowncouncil.co.uk

Tel: 07531 580499 during office hours. www.middlehamtowncouncil.co.uk

Our Book Swap is working well and has a lot of choice, but we can only accept *paperbacks* in reasonable condition. Thank you.

Community Police: If you need to contact our local PCSO ring 101

Merry Christmas and a Happy New Year to everyone.



CAROLS AROUND THE CHRISTMAS TREE

CHRISTMAS LIGHTS SWITCHING BY OUR MAYOR,
CLLR SUE FAIRHURST

The Market Square, Friday 2nd December at 6.30pm

Refreshments kindly donated by:

The Black Bull (mince pies)

*The Wensleydale Hotel (sausage
rolls)*

Richard III Hotel (mulled wine)

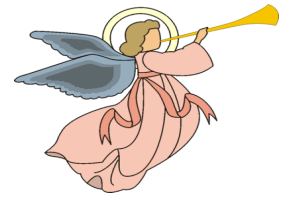
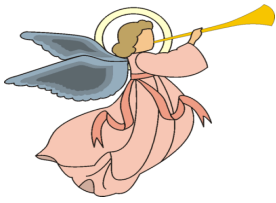


*Carols led by members of
the church choir and the
children of Middleham
Primary School*

**Carol Sheets will be
circulated.**

We hope to see you there!!





Please come and join us at
St. Mary & St. Alkelda's Church, Middleham

For An Evening Of Carols & Festive Readings

Friday 9th December @ 7.30pm

Mulled Wine & Mince Pies

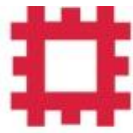
Please join us in the Church – All are welcome



Christmas
**SERVICES
& EVENTS**

**Christmas Day
Service of Holy
Communion for
all the family
9.30am at
St Alkelda's,
Middleham**

Join us for a service of celebration of the birth of Jesus. Bring one of your presents to show.



ENGLISH HERITAGE

Come and join us for our Christmas celebration at

Middleham Castle

Medieval home of King Richard III



Castle Hill, Middleham DL4 8QG

December 10th and 11th 10am - 4pm

**Free mince pies and mulled wine
& maybe a song or two!**

Entry to the gift shop is free.

**A ticket is needed for entry to the grounds
You do not need to book in advance.**

East Witton News

From St John the Evangelist:

COFFEE DROP-IN

Pop in for coffee and chat at the Coffee Drop-Ins, in the Parish Room, on Wednesday 7th December and 11th January 2023, 10.30 a.m. – 11.30 a.m.



CAROL SINGING

Carol singing this year will be solely around East Witton Village and the monies collected will be shared between Martin House Children's Hospice and the upkeep of St. John's Churchyard.

This will be on **Thursday 15th December, starting at 6.30 p.m.** at the bottom of the village green.

If you have any queries about the carol singing, please contact Graham Rhodes on 01969 625434.



CHRISTMAS COFFEE MORNING WITH STALLS

Please join us for the Christmas Coffee Morning on **Saturday 3rd December 10 a.m to 12 noon.**

Cake stall; cards; gifts; Raffle as well as refreshments on offer. You will be very welcome.



CHRISTMAS EVE CRIB SERVICE (*for all the family*)
at St John the Evangelist at 3pm.

If you would like, come dressed as a shepherd, angel or magi.



CHRISTMAS EVE HOLY COMMUNION SERVICE
at St John the Evangelist at 7.30pm.

Thornton Steward News



Carol Service at St Oswald's,
Thornton Steward at 6.30pm on
Friday 16th December

A mixture of carols and readings
for Christmas.

Christmas Day
Holy Communion @ 11am

Social Get-Togethers on 1st Saturdays in the month, in The Institute, at 7.30pm.

<https://www.facebook.com/groups/908155472988654/>

COVERDALE WOMEN'S INSTITUTE

Coverdale News

theWI

Meeting at Coverdale Memorial Hall, DL8 4AY on 3rd Wednesday of each month at 7:30pm Contact Sara Baldwin-Cole 01969 640550

14th December – Christmas Function (Location – Foresters Arms, deposits required)



**Christmas
Afternoon Tea**
Monday 5th December
2pm – 4pm
Coverdale Memorial Hall

A Sociable Get Together &
EVERYONE IS WELCOME!

£4 per person
If you would like to come along please
RSVP by 30th November
Contact: Sara 540550, Julie 640271 or Kimberley 640487

COVERDALE
WOMEN'S INSTITUTE theWI



January Jolly

Coverdale Memorial Hall, Carlton in Coverdale, Leyburn, DL8 4AY

Sunday 22nd January at 12:30am, doors open at 12:00

£5 per person, bring your own drinks

Book your tickets from Kimberley 01969 640487 by 16th January.

This event is subsidised by Coverdale WI

Re. January Jolly (above) - Sunday Lunch on Sunday 22nd January 12 for 12.30pm will be open to EVERYONE, all ages, etc and at £5 per person (great value!), that will be subsidised by the WI and something to do in Dark and Dank old January. We will have to cap numbers to 60, so book early if there's a group of you want to come. (Details above.) Pay on the day. (As with the previous events bring your own tippie of choice).

Fri 3rd Feb
2023 –
Domino
Drive: *Doors
open at 7
for 7.30pm*



Our Domino Drive is a lot of fun for the community, open to players and non-players. Tickets are £2 on the door including refreshments. Raffle and Prizes for worst and best players plus junior prizes.

This event is to raise funds for Coverdale WI community events



CARLTON HIGHDALE

COMMUNITY WASSAIL EVENING

Come and join us for a convivial Christmas Sing-Along & a Wassail. (.....A Traditional Seasonal Punch Drink)

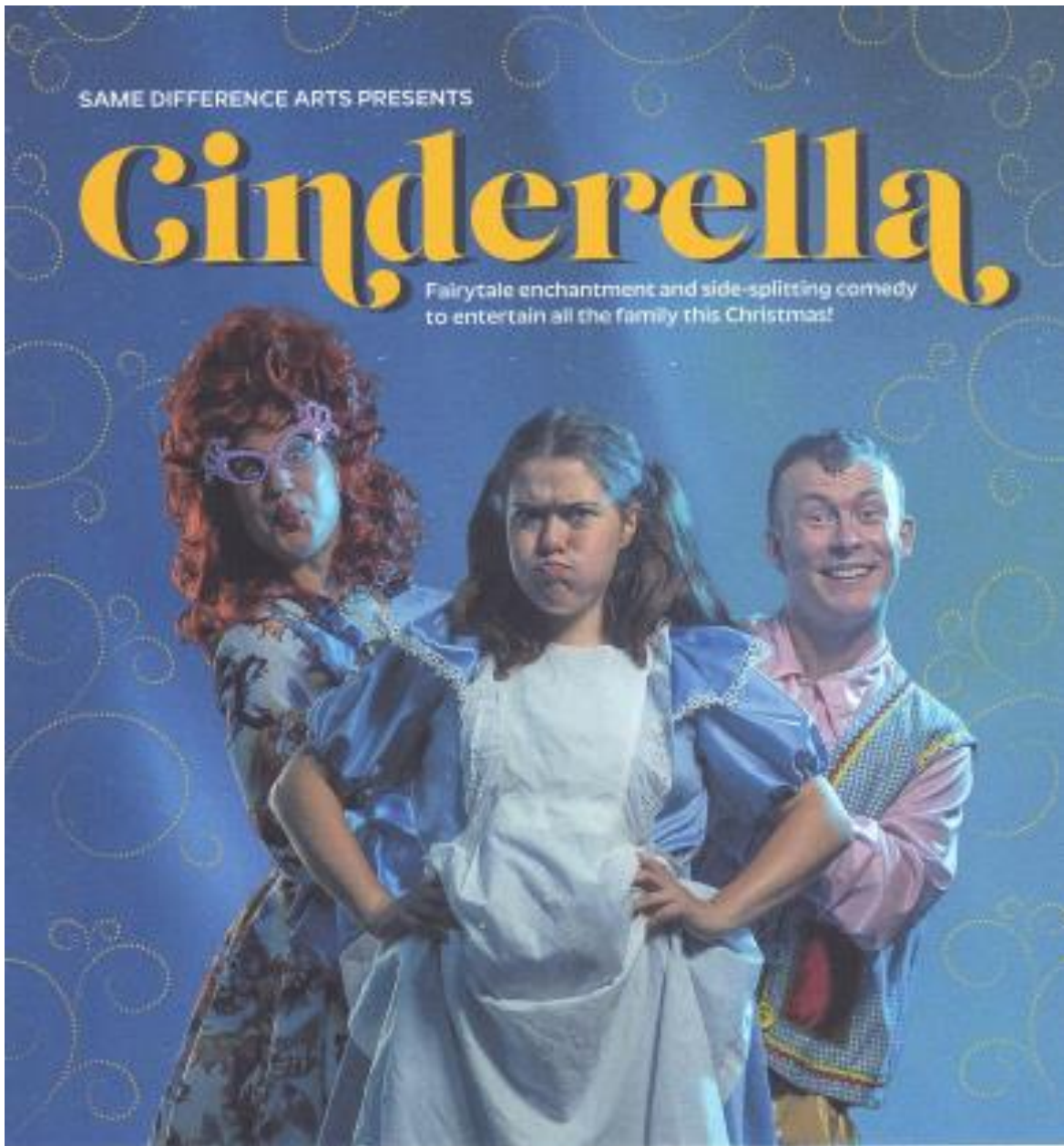
Saturday 10th December, 7.00 pm

The Village Hall, Horsehouse

£2 on the door Children under 16 Free Everyone welcome!

Bring your tippie of choice and a good voice!





This hysterical family pantomime follows Cinderella as she struggles to outwit her nasty stepsisters, get to the Prince's Ball and save the enchanted forest. Combining fairy-tale enchantment with side-splitting comedy, this year's pantomime will leave the whole family entertained and enchanted!

COVERDALE MEMORIAL HALL, CARLTON-IN-COVERDALE
WEDNESDAY 28TH DECEMBER 2022

Matinee performance at 2pm (1:30pm for touch tour)
Light refreshments, captioning and touch tour available

Tickets from: Heidi 640639, Howard 640689, Caroline 640663
Adults £10, Children £5

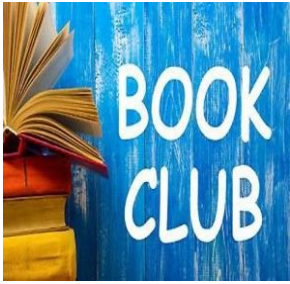


ARTS COUNCIL
ENGLAND



Same Difference Arts try to make sure their show as accessible as possible by:

1. *Providing a touch tour / familiarisation before the show starts. – This will last 20 minutes, and allows anyone with sensory access needs, to get a familiarisation of the show before they experience it. It's perfect for anyone hard of sight, and those on the autistic spectrum, but anyone is welcome to attend.*
2. *Use of captioning during the show. There will be at least 2 devices available to borrow for those that are hard of hearing so that they can read the script as the show is happening. (There is also a hearing loop available at Coverdale Memorial Hall)*
3. *Providing a quiet space or relax zone with bean bags available for any audience members that may want to go out and take a few moments.*



Coverdale Book Club

Meetings are on second Tuesdays at 11am at The Forester's Arms, Carlton and lunch afterwards if you wish. Everyone welcome.

Our next meeting is on Tuesday December 13th

The Man who Planted Trees by Jean Giono

We plan to have Christmas Lunch afterwards, this needs to be pre-booked

Please email: dinah@travelcounsellors.com

The Book for January is: **Kolymisky Heights by Lionel Davidson**



Methodist Services in Coverdale:

4 th Dec	10.30am	Melmerby Chapel	Rev Kathleen Wood
11 th Dec	10.30am	Carlton Chapel	Rev Melanie Reed with Holy Communion
18 th Dec	10.30am	Melmerby Chapel	Mr Rowland Dent
25 th Dec		NO SERVICE AT CARLTON OR MELMERBY CHAPELS	

2023

1 st Jan	10.30am	Carlton Chapel	Mr Howard Thomas
8 th Jan	10.30am	Melmerby Chapel	Mr Tomasi Maswini
15 th Jan	10.30am	Carlton Chapel	Locally Arranged Service
22 nd Jan	10.30am	Melmerby Chapel	Mr Allen Dinsdale
29 th Jan	10.30am	Carlton Chapel	Mrs Janet Leahy

Walk with Jesus, witness to others, worship the Lord



Sat 17 Dec	2pm	Carlton Chapel	Young Peoples' Celebration of Christmas
Sat 24 Dec	6.30pm	Melmerby Chapel	Christmas Eve Service Rev Kathy Couchman
Sun 18 Dec	6pm	Coverham Church	9 Lessons and Carols
Sat 24 Dec	9.30pm	St Botolph, Horsehouse	Christmas Eve Communion service

Plans for a railway line through Coverdale – *Jonathan Watson*

Earlier this year it was proposed to build a subway for a public footpath under a new racehorse gallop near Middleham. This caused much discussion between the developer, planners, councillors and some members of the public; and it was decided it was not necessary. However, I wonder what people think about a railway tunnel under Middleham Low Moor and a viaduct across Wensleydale from Middleham to Spennithorne?



Good rail links are important, and in the north of England, connectivity between east and west is as important as north and south, though more difficult because of the Pennines. A line through Coverdale would link Skipton to Northallerton and hence, Liverpool to Newcastle. Not part of the Government's

Northern Powerhouse project, this idea is over 100 years old.

My neighbour in West Scafton died recently. He was like many of us, an incomer, he enjoyed the countryside, the wildlife, the walks and the local history. He was the main author of the West Scafton Millennium Book. I was given some of the research papers he had used for the book and amongst them I found some plans made up by The Yorkshire Dales Railway Company in 1895.

The railway line would have come up Wharfedale to Kettlewell and then tunnelled for approximately three miles under Park Rash, entering Coverdale at Coverhead. It would have then accompanied the road and river travelling down the dale below Bradley, Horsehouse and Gammersgill. Perhaps there would have been a small station, similar to Wensley Station, where the line had to cross the road between Carlton and West Scafton.

Plans show the line following close to the course of the river most of the way until just below Coverham, then, it turns in a north easterly direction. The ambitious plan was to tunnel under Middleham Low Moor for 770 yards, starting just east of Pinker's Pond and coming out at the other side, west of Sharp Hill Farm near the end of Park Lane. It would have then been carried over a long viaduct across Wensleydale. Ribblehead viaduct is 437 yards long: this one would have been 550 yards, crossing the Ure between Gell Pool and Middleham Bridge. After which, the line was to continue on to Darlington, Stockton and Middlesborough.

A similar viaduct in the photograph crosses the River Calder at Whalley in Lancashire. It was built by the Blackburn and Bolton Railway Company in 1850 and still carries a regular passenger service from the countryside into Manchester. For our line, the company could not raise sufficient capital to construct the Coverdale link. What a difference it would have made to life in this area if the Yorkshire Dales Railway had been built.



**The Parish of Middleham with Coverdale, East Witton & Thornton Steward:
'Jervaulx Churches'**

Private Prayer in Church: Our churches are open daily for private prayer.

Parish e-services: Sundays - a weekly email service of worship (email jervaulxliz@gmail.com)

Wednesdays - a weekly email reflection Please email jervaulxliz@gmail.com for details.



Sunday Worship – everyone is welcome to all of our services.

Our churches are **DOG FRIENDLY**.

Sunday 4 Dec	9.30am	Middleham church Holy Communion
	11am	East Witton church Morning Worship
Friday 9 Dec	7.30pm	Middleham church: Carols & Festive readings
Sunday 11 Dec	11am	East Witton Parish Holy Communion
Friday 16 Dec	6.30pm	Thornton Steward church: Carol service
Sunday 18 Dec	9.30am	Middleham Church Holy Communion
	6pm	Coverham Carols at Coverham church
Saturday 24 Dec	3pm	East Witton Church: Crib Service
	7.30pm	East Witton Christmas Eve Service
	9.30pm	Horsehouse Christmas Eve Service
Sunday 25 Dec	9.30am	Middleham Church Holy Communion
Christmas Day	11am	Thornton Steward Church Holy Communion
2023		
Sunday 1 Jan	11am	Middleham Quiet Reflective Holy Communion
Sunday 8 Jan	11am	Thornton Steward Plough Sunday – at the farm
Sunday 15 Jan	9.30am	Middleham Morning Worship
	11am	Horsehouse Holy Communion
	3pm	East Witton BCP Evensong
Sunday 22 Jan	9.30am	Middleham Holy Communion
	11am	East Witton Holy Communion
Sunday 29 Jan	11am	East Witton United Parish Communion
	3pm	Middleham <i>Candlemas service tbc</i>
Sunday 5 Feb	9.30am	Middleham Holy Communion
	11am	East Witton Morning Worship



Bible study/ discussion group

Our new home group is meeting at Revs Jeff and Liz's house – to discuss, agree and disagree or just listen. Come whether you are connected to a church or not. Fortnightly on a Monday 7.30pm – 9pm with coffee and cake to begin. Our next meetings are December 12th, and January 9th and 23rd. More details 01969 326069

Weddings/ Funerals/ Christenings (baptisms)/ Confirmation

For more information please get in touch with the rectors, Jeff or Liz: 01969 326069 – or via contact details at end of Bridge.

Christenings (aka baptisms) take place during the main Sunday services



Wensleydale Filling Station [Every second Friday - not August /Jan]

Thornborough Hall, Moor Road, Leyburn DL8 5AB 7.00 – 9.00pm

These are monthly meetings where we can celebrate our Christian faith in an informal manner and provide an opportunity to hear more about the love of God for our lives.

Next meeting: Friday 13th January 7pm – 9pm

<http://thefillingstation.org.uk/station/wensleydale/>

Contact: 07714 204024 mikehirst3@gmail.com

At St Matthew's, Leyburn

Sunday 11th December at 6pm

'When Christmas Hurts'

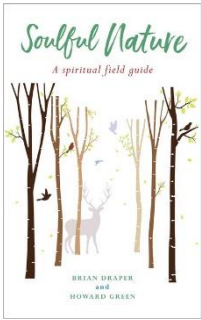
A chance to remember loved ones who have been lost.



Leeds Diocesan Eco Book & Film Group Zoom

Both science and common sense tell us that human activity is damaging our planet's ability to support life. Many people would like the opportunity to talk through these issues, to explore, discuss and share fears and hopes for the future. Through reading together, we can provide that space and opportunity to talk together about the environmental crisis through the themes and topics of the books we read and discuss.

Programme : January – March 2023



Tuesday 17 January 2023 10am - 11.30am

Soulful Nature: a spiritual field guide

(2020 Brian Draper and Howard Green)

This takes us through twelve places to walk in both rural and urban areas to notice what happens through the months, the season and the year and how we take our place within it.



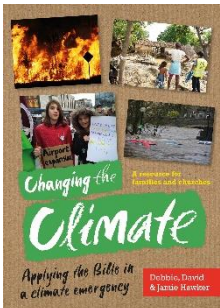
Tuesday 21 February 2023 10-11.30am

The Next Great Migration (2020 Sonia Shah)

The story of movement on a changing planet. And/or

We are all from somewhere else (2012,2020 Ruth Padel)

This book is on a similar theme of human, bird and animal migration and survival, written here in poetry and prose.



Tuesday 21 March 2023 10-11.30am

Changing the Climate (2021 Debbie, David and Jamie Hawker BRF). Applying the Bible in a climate emergency.

Film adaptations and thematic film and tv explorations will be discussed at each meeting. Please contact for further details and zoom link:

<https://www.leeds.anglican.org/environment/training-opportunities>
cajack1@gmail.com

Some free prayer/ Bible study apps to try:



[Lectio 365 - 24-7 Prayer International](#) Cost: Free

Meditative, Intercessory

Who's it for: The time-squeezed / those who want to apply the Bible to everyday life

Average length of session: 10 minutes



[Pray as you go - Pray as you go \(pray-as-you-go.org\)](http://pray-as-you-go.org) Cost: Free

Meditative, Ignatian spirituality which uses imagination

Who's it for: Contemplatives, imaginative types

Average length of session: 10 minutes



The Bereavement *Journey*

Are you grieving the death of a loved one or struggling with the long-term effects of loss? A six-session weekly course will be running here from January 25th at 7 pm



RIPON
CATHEDRAL

Topics include:

- attachment, separation and loss;
- the impact of pain of bereavement;
- adjusting to change;
- anger and guilt;
- coping with others' reactions;
- moving on healthily.

There is an optional 6th session on faith questions.

For more information or to register an interest in attending please contact:

flonapearman@riponcathedral.org.uk or ring the cathedral office: 01765 603462

RIPONCATHEDRAL.ORG.UK



Ripon Cathedral: For services over Christmas see: [Worship | Ripon Cathedral](#)

Bird notes from Richard Wells

It's mid-November. We have yet to experience a frost and I believe that the winter bird migration still has some way to go. Extraordinary. The winter thrushes – fieldfares and redwings – arrived in modest numbers at the end of October and a few woodcock (right) have been disturbed in the soggy areas of some of our woods. But where are the duck?



A handful of mallard hang around the banks of the Ure and Cover and I observed a couple of redheaded goosanders flying downstream near Jervaulx on Nov 13th, but there is not a trace of any teal or wigeon. Both species are usually present in their tens and sometimes hundreds this late into autumn. I can only think that the mild autumn weather we have experienced so far in 2022 has also been a feature of the Baltic states and so until that changes they remain



there rather than here. It will be interesting to see if that changes as we get into December.

On the subject of migration in early November, while walking the dogs on the footpath between the Cover Bridge and Jervaulx I noticed huge flocks of wood pigeon flying south. You might have a pigeon or two

around your garden but wood pigeons from further north do go south in the winter. I didn't do an exact count but I estimated that in 15-20 minutes around 2,500 passed over me in flocks ranging from 50-500. Not the most exciting bird, but interesting nevertheless. There are two

sites in the southern Pennines near Halifax where birdwatchers DO count the wood pigeons migrating south. Figures of 30,000 plus have been recorded.

Kingfishers were still being seen on both the Ure and Cover into November (another indication of mild weather), a dozen long-tailed tits in Paul and Pauline Hargill's garden in East Witton thrilled them, and I had a report of in excess of 200 pink-footed geese in a single skein flying south over Kilgram Bridge on Nov 12th. Enjoy your festive



birding and please report your sightings to rmwellsew14@gmail.com

Biodiversity in the churchyard: The hedgehog



Some of the children in Middleham recently constructed a 'hedgehog' hotel in the churchyard. We hope that one of these beautiful creatures will take up residence at some point, though they should currently be hibernating. Though persecuted in the past, hedgehogs are now considered to be 'a gardener's best friend', as they will eat insects, caterpillars and slugs lurking in vegetable beds.

They are mainly active at night, and may roam over 2 - 4 km in search of food. Their life span is on average 2 – 3 years, but sadly there are many threats to hedgehogs, and surveys have shown that numbers declined – in the 1950's there

were about 30 million hedgehogs in Britain, and now there are only 1 million and hedgehogs now find themselves on the IUCN (International Union for Conservation of Nature) Red List for British Mammals – which means they are vulnerable to extinction.

Here are some of the hazards they face:

- Traffic; especially during the spring and summer. As hedgehogs roll up when threatened with danger they are easily squashed by cars when trying to cross the road.
- Habitat loss; The growth in intensive farming since the 1940s has removed many of the hedges, woods and small fields in which hedgehogs thrive. The trend for tidy gardens and lots of decking and paving have also reduced the habitats of mixed vegetation and fallen leaves that hedgehogs love.
- Chemicals such as insecticides and slug pellets reduce the natural food available. Also, tiny quantities of chemicals are present in slugs, beetles etc. and as hedgehogs may eat hundreds of these every month they can accumulate enough poison to affect their health.
- Drowning; if a hedgehog falls into a steep-sided pond, it often drowns because it cannot climb up the smooth sides. A pile of stones at the edge will help the hedgehog escape.
- Cattle grids; hedgehogs often fall through these and cannot climb out so they starve to death. Ramps or tunnels built inside the pit can help the hedgehog escape.
- Hibernation; hedgehogs can die during hibernation due to cold, bonfires, flood or someone wrecking their nest.

If you see a hedgehog that needs help you can contact:

[HAPPY - hedgehog appreciation prickly pals Yorkshire | Ripon | Facebook](#)
07506 186567 morrelljac@aol.com

Tips for a hedgehog with an emergency:

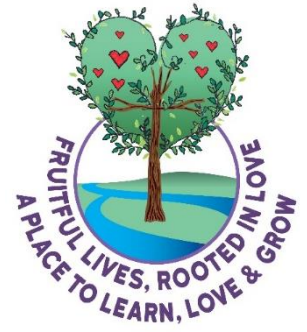
[Emergency - Happy Hedgehog Rescue](#) [Happy Hedgehog Rescue](#)



Hedgehog in stained glass window, Brill, Bucks

Ways you can help: [Hedgehog - Helping Hedgehogs](#) | [Young People's Trust For the Environment \(ypte.org.uk\)](#)

THE FEDERATION OF MIDDLEHAM (VA) & SPENNITHORNE (VC) CE PRIMARY SCHOOLS



Ofsted Inspection – A time to celebrate! GOOD!

We are extremely proud to have been recognised as ‘good’ in all areas in our recent Ofsted inspections in October 2022.

Inspectors noted that pupils “love coming to school” and were wowed by the “safe, welcoming and family feeling” at both sites. The schools were praised for having high expectations of all pupils and preparing them well for their next steps in education, with children working hard, listening well and playing well together.

Reading and Maths were particularly highlighted for praise, thanks to an ambitious and well-sequenced curriculum, specialist training for staff and extra support for pupils where required.

Early years staff were found to be “kind and nurturing”, helping youngsters to settle well into school life, and in all year groups children are given a range of opportunities to develop their talents and wider interests.

The grade marks an impressive turnaround for the schools and Ofsted noted that incisive self-evaluation, precise planning and strategic changes have led to recent improvements. I am so proud of the pupils, staff, governors and wider community in achieving this amazing result.



Open the Book

It was lovely to welcome Rev Liz & Rev Jeff and tem to lead Open the Book this month. They will be coming in to each school alternate weeks to lead collective worship with the children.

In the photo you can see the children “opened the book” to hear about the story of how Jesus was baptised, linked to this half term’s Christian Value of peace.

Remembrance Day

As a federation the children and staff have spent some time thinking about those who are serving today as well as those who fought for our country in the past. The children at Middleham collaborated with KidZ Day Nursery to create a wonderful display of poppies and at Spennithorne the fence was lined with an equally beautiful display.

At Middleham, some of our Collective Worship Leaders led a very thought-provoking worship to help us remember the importance of this special day,



STARTING SCHOOL IN SEPTEMBER 2023?

We warmly invite you to come and tour our facilities and meet the Early Years Team and children.

Call the school office to arrange a time to visit:
01969 623474 (Spennithorne) or 01969 623592 (Middleham)



“ Staff are kind and nurturing, which helps children to settle into school ”

Ofsted October 2022





THE WENSLEYDALE SCHOOL & SIXTH FORM LEYBURN



Another busy month at the Wensleydale school. Firstly, we sent 35 students and staff off to Berlin for a 4 day, cultural and history related visit to Germany. The Year 10 and 11 students who study visited a number of key sites that really brought home the historical events. For some students this was the first time abroad and although apprehensive, thoroughly enjoyed the whole experience. The pivotal moment for many was standing in a hall, on the very wooden floor where Hitler had given a speech in the 1930s.

However the extensive trip also covered a number of other museums including, a 3-hr walking tour of Berlin, a visit to the Reichstag for a self-guided visit to the Dome and Rooftop Terrace, as well as trips to the Checkpoint Charlie Museum, the Topography of Terror, located in central Berlin on the site of the former

Gestapo, SS and SA headquarters, (it contained documents illustrating the terror and crimes of the Nazi era), a visit to the German Resistance Memorial Centre and a more emotional visit to the Memorial to the Murdered Jews Visitor Centre. This memorial housed a permanent exhibition on the Wannsee Conference – the Wannsee Villa is where the ‘final solution’ to exterminate the Jews of Europe was drawn up. The museum gave an insight, not only into Nazi politics and methods, ghettos, death camps and life in concentration camps but also demonstrated, chillingly, the bureaucracy involved in planning the deaths of thousands of European Jews.

Similarly there was a challenging visit to Sachsenhausen which was a Nazi concentration camp from 1936-1945 and a Soviet disciplinary camp from August 1945 to March 1950. It was first used to intern political prisoners, but later they were joined by other prisoners considered ‘racially inferior.’ It is thought that between 40,000 and 90,000 prisoners died there. In 1945, the



SS removed prisoners to avoid them being liberated by the Russians and thousands died on the so called 'death march.' The installations at the camp are preserved in their original state. Finally, a change of pace and some much need relaxation at The Olympic Stadium which was constructed between 1935–36 for the 1936 Olympic Games. The site's conception is characteristic of the monumentalist architecture of the Third Reich and is still used as a sporting venue. The former Reich sports field includes the Maifeld, which was originally designed for political rallies. We rounded off an exhausting, emotional and thought provoking 3 days at the Hard rock cafe. My thanks to Mr Ellis, Mr Barnett and Mrs Housley who led and organised the trip. Students have said it is something they will remember for ever.



In other news...More locally we sent 65 students and staff to Ripon Cathedral for the annual Service of Remembrance for our Service students. This year our choir had composed a new piece in memory of our late Queen Elizabeth II and this was performed during the Service.

We took delivery of our 2nd minibus in order to have more flexibility for students wishing to join us outside of catchment.

We have also welcomed curate Rev Gillian Lunn, who has started visiting school weekly in order for students and staff to talk and our hope is that we have more chaplaincy work within in school from the New Year.

As I write we are planning. Christmas lunches, carol singing, Yr11 Mock examination timetables, the Winter concert which will include the presentation of some awards for our most outstanding students from 2021-22.

A very Happy Christmas and New Year from The Wensleydale School.

Julia Polley, Headteacher 01969 621007 07808209365



Wensleydale Tournament of Song

Just a reminder that the Syllabus is still available from myself. Email secretary.wts@outlook.com Tel. 07423 532544), from Hewson's of Leyburn, or on the website which can be downloaded. Entries must arrive before January 31st, and early arrival of your entry form would be much appreciated, as it all tends to get very hectic by mid January.

On behalf of the Tournament, I would like to wish you all a peaceful Christmas and a Happy New Year.

Best wishes, Jacky Wilson



Leyburn u3a Group:

at the Arts and Community Centre, Leyburn

Friday December 16th - Social Event - Mince pies and chat.

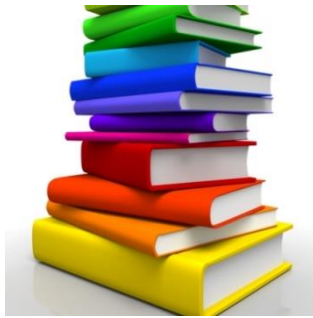
January 20th 2023: Danny Grocock - Tax, Care & Toy Boys

February 17th: Tony Skully & John Anderson - Poetry is a

Tender Power.

Meetings: 3rd Friday of every month at 10am. Visitors are always welcome.

Leyburn Community Library Services



Mondays 10am - 4pm

Fridays 10am - 4pm

Tuesdays 10am - 6pm

Saturdays 10am - 12noon.

Public computers available when library is open, no booking required

Technical advice Tuesdays 12.30pm - 2.30pm, drop-in, or call 01609 535971 to book a slot.

Storytime Stories and craft activities for 0-5 year-olds:

Weekly on Saturdays 10.30am - 11.15am- look at the Library Facebook page to check

Book Reservations etc Books can be reserved and renewed online via your library account or by phoning 01609 535971 - direct line to the library desk at Leyburn.

Bellerby Study Group

Meets on Wednesday evenings at 7.30pm

in the Memorial Hall, Church Street, Bellerby DL8 5QL

Talks are followed by refreshments and a chance to chat.

The cost for this term will be **£10** to join as a member for the 8 talks scheduled for this term, or **£3** for a single visit.



Wednesday, 25th January, 2023:

A talk by Mike Warden entitled "Huskies at Halley Bay".

A slideshow of working huskies, the principal form of transport in the field at the most remote British Antarctic base 50 years ago.

Any queries can be directed to Steve Akrill on 07812 983283



LEYBURN ARTS & COMMUNITY CENTRE

Tickets/ Info: 01969 624510 leyburnartscentre.com
Please book tickets in advance if possible, call us Mon-Fri 1-4pm

CINEMA (£6, or 60+/U14 £5)

- FRI 2 DEC** 6pm **Fisherman's Friends: One and All** (12A) 1hr 51m
FRI 9 DEC 6pm **Nothing Like a Dame** (12A) 1hr 24m
FRI 16 DEC 6pm **Little Miss Sunshine** (15) 1hr 41m
FRI 23 DEC 6pm **Lost Christmas** (PG) 1hr 29m

FRENCH FILM FESTIVAL (£6, or 60+/U14 £5)

- TUE 6 DEC** 7pm **The French Minister** (15) 1hr 53m
TUE 13 DEC 7pm **Christmas & Co.** (15) 1hr 39m

OTHER DEC & JAN EVENTS

- SAT 10 DEC** 7:30pm **Christmas Show with Colin Bailey etc.** £12 (Vols £6)
SUN 8 JAN 2pm **Live Cinema: Andre Rieu in Dublin** £12 (Vols £6)
&TUE 24 JAN 2pm £12 (Vols £6, Tues Club £10) – Includes Refreshments
FRI 13 JAN 7:30pm **LADS: Two One-Act Plays, 'Allo 'Allo & Dad's Army** £10 (Vols £5)
THU 26 JAN 7pm **Live Cinema: The Crucible** £15 (Vols £7.50)



Recent news by Jeannie Bishop

We were very pleased to have our Knit N Natter group involved in the Poppy display to celebrate 100 years of the Leyburn branch of the Royal

British Legion - the result looked very impressive.

The other highlight of November was our participation in the French Film Festival which continues into December. We are fortunate to get such good quality screenings here in Leyburn, which are not always available elsewhere.

We were very grateful to the Co-op and its members for being one of their three charitable causes for this year and wish the new community causes success. They are St Matthew's Church; Spennithorne & Harmby Junior Football Club; and the 1st Wensleydale Scout Group. This fundraising by the Co-op and its members has made a big difference to us.

December can be busy but we hope you find the time to enjoy our events – see advert above. Finally, thanks to all our supporters and volunteers, next year is our 10th year from gaining the lease of The Old School House and our first opening! Can you believe it??

The Knit'N Natter group at Leyburn Arts & Community Centre

Meet **Wednesdays fortnightly from 7pm - 9pm**, coffee and biscuits included, fee £2 towards the Arts Centre's funds. For future dates of Knit'N Natter contact 01969 624510.

IT'S A SCAM!

Energy crisis scams

- Scammers are taking advantage of the rising cost of energy bills by impersonating energy providers, local councils, the government or Ofgem with offers of support or rebates.
- Through bogus cold calls, fake texts, emails and online adverts their aim is to get you to provide your personal and financial information, which they can use to scam you in the future.
- The latest energy scam involves a bogus text posing as the government, asking you to click on a link to apply for the £400 energy grant.
- If you receive a text like this or similar, don't click on the link. Your grant will be applied to your account automatically – you don't need to take any action.

Cost of living - Don't let scammers ruin your retirement

- With the cost of living impact deepening, you may consider withdrawing your pension earlier than planned. Pension scammers are tricking victims with false promises of a better lifestyle in retirement or more money to support a better life in hard times.
- They'll use fake adverts offering free pension reviews, guaranteeing better returns on your pension savings. Usually with offers that are too good to be true!
- The Financial Conduct Authority provides a warning list so that you can check if an investment or pension opportunity you've been offered is genuine to avoid scams.

Courier scams

- Criminals are calling victims posing as the Police and telling them that their card is being used fraudulently or that their money isn't safe. If you receive a call and are told to move your money for safety reasons or to take cash out and hand it over to 'assist with an investigation' - It's a scam!
- The Bank or the Police will NEVER ask you to do this and would never arrange to come to your home to collect your PIN, bank cards or cash.



Which Bridge? *Answer at the end of Bridge*

Next Bridge:

Please send any items to: bridgemagazine@outlook.com
by the **deadline: Tuesday 17th January**

It may sometimes be necessary to edit articles. Sometimes space is limited so not all articles can be included. Please note: The views expressed in the articles are those of the author.

ADVERTS

*If you would like to advertise in Bridge, please contact bridgemagazine@outlook.com
There is a small fee which contributes to our ability to produce/ distribute Bridge for free.*

CARE PROVIDERS

- ❖ **PREMIERE CARE** – Family run private domiciliary care agency supporting our clients with a bespoke home care service. Based in Leyburn, we provide hourly care locally and live-in care to clients across Yorkshire. For an informal chat about our service please call one of our management team on 01969 622499.
- ❖ **The MILLINGS RESIDENTIAL CAREHOME**, North End, Bedale. Rated as Outstanding by CQC our family owned carehome, based in beautiful surroundings, puts you at the heart of our care. Call us anytime on 01677 423635 or visit our website www.residential-homes.net

BUILDERS/ SERVICES FOR THE HOME

- ❖ **STONESCAPES HARD LANDSCAPING AND BUILDING** All aspects of traditional building works including barn conversions, roofing, porches, extensions, underpinning. Patios, paths, driveways, walls, dry stone walling, steps, excavations, fencing, turfing, low maintenance gardens. Frank Johnston 01969 640457 or 07803 735000 www.stonescapes.com email frank@stonescapes.com
- ❖ **P H MACHIN LTD.** Plumbing and Heating Engineers serving Leyburn and the Dales. GASSAFE Reg. Oftec Reg. WRAS reg. Biomass approved. All aspects of plumbing and heating covered: Boiler &

central heating installations, full bathrooms and wet rooms, inc disabled wet room adaptations. Power flushing central heating systems, unvented hot water cylinders, air & ground source heat pumps, underfloor heating systems. Grant G-one. 01748 833316. email:

audrey.machin@btinternet.com

- ❖ **THE DALES SWEEP - MARTIN TRADEWELL** A member of the Guild of Master Sweeps. A prompt, reliable service from your experienced Dales sweep. Qualified & insured. Bird guards/cowls fitted. Sweeping Coverdale, Wensleydale & Swaledale. Phone: 01969 640099.
- ❖ **ARTISAN LOCKSMITHS your local locksmith in Bedale** - Looking for domestic and commercial locksmiths? Call the local locksmiths at Artisan Locksmiths on 07595 749 763 for services in Bedale and across North Yorkshire.
- ❖ **TheLogCompany.com SEASONED HARDWOOD LOGS.** Your local supplier of the finest quality kiln dried, hardwood & softwood logs with free delivery. Log stores, kindling, briquettes, smokeless fuels, fire bowls and wood fired hot tubs available to buy and hire! Order online TheLogCompany.com www.TheLogCompany.com or call 01748 889298

HEALTH

- ❖ **ANDREW R. WAITES** MSSCh.Dip.Pod.Med.MBChA.IOSH.PJ - **Podiatry Clinic** - Appointments available with Rosemary Gunner S.A.C. Dip. FHP 01969 623189 to book. 5 Market Place, Leyburn DL85BJ (Next door to Kim's Coffee Shop)
- ❖ **THE HEALING COLLECTIVE** Encouraging health & wellbeing with a range of therapies including Counselling, Reiki, Bach Remedies, Reflexology, Indian Head Massage and EFT('tapping'). We can also treat animals of all shapes and sizes with problem behaviours. Coach House, Berry's Farm Shop and Cafe, Swinithwaite, DL8 4UH.
Tel: 0845 474 2383 or 07981 908717 Website: www.healingcollective.co.uk e mail: info@healingcollective.co.uk

PRE-SCHOOL

- ❖ **Kidz Day Nursery & Preschool** – Places for children 3 month to 8 years. Open 51 weeks per year. 7.30 – 18.00. Before and After school club, and holiday club. Contact us to arrange a show round of this amazing setting
01969 622833 or email info@kidzdaynurserymiddleham.co.uk
- ❖ **Harmby Under 5's Pre-School based at Spennithorne School.** We have funded places available for 2, 3- & 4-year olds. Our Ofsted report was rated 'Good' in May 2022. We have qualified, experienced staff. We are open daily in term time from 8.45am - 3.15pm. Contact us on 07708 305805 or email: harmbyu5s@outlook.com

LOCAL SHOPS

- ❖ **CENTRAL STORES, Middleham. Grocers, Newsagents + Off Licence** Open "Till Late" everyday. (01969) 623224
- ❖ **VICTORIA'S LINGERIE Stockists** of Fantasie, Triumph, Sloggi, Freya & many more. Free fitting service. 11 High St. Leyburn. 01969 622102.
- ❖ **HOUSE and HOME** Market Place, Leyburn. **HOUSE and HOME** Town Hall, Leyburn **HARDWARE, Gardening Items, Tools, GIFTS, Camping & Caravan Accessories.** Plus the biggest **TOYSHOP** in the area. Tel. (01969) 622150.

LEGAL/FINANCIAL

- ❖ **WENSLEYDALE PAYROLL** – a bespoke payroll service to small businesses. Tel: 07810 521982 or email wensleydalepayroll@outlook.com www.wensleydalepayroll.co.uk
- ❖ **DAWN CLARKSON ASSOCIATES** Accountants and Business Advisors. Established reputation for serving small businesses. Tel: 01969 624999 www.dawnclarkson.co.uk.
- ❖ **JOHN G HILLS & PARTNERS** - Our team of qualified chartered surveyors, valuers, land and estate agents are happy to advise on all land and property related matters including: Property sales, valuations and surveys, estate management and lettings, landlord and tenant, rent reviews, agri-environment schemes & planning and development. 01969 623109 www.jghills.com

CAFES/ LOCAL ATTRACTIONS

- ❖ **THE WENSLEYDALE EXPERIENCE.** Yurts, Berry's Farm Shop & Cafe, Dales Walks, Farm Tours, Events and more! We launched our own Yurt so you can come and experience the best of the Yorkshire Dales. Or visit our award-winning food and farm shop! The Wensleydale Experience is about giving you the chance to experience the best of the Yorkshire Dales. Everything we do is focused on sharing with you a sense of who we are, & what it feels like to live and work in Wensleydale. enquiry@wensleydale-experience.com

TRAVEL SERVICES

- ❖ **DINAH@TRAVELCOUNSELLORS.COM** “Your Local Travel Agent” serving the Dales and Beyond. Full financial protection. Quality independent service nearly 40 years’ experience. Call Dinah on 01969 678060 or email.

ANSWER: Which bridge?

Helix Bridge, Singapore

Contacts:

Revs Jeff and Liz: 01969 326069 jervaulxjeff@gmail.com jervaulxliz@gmail.com

Churchwardens:

Middleham – Margaret Brabban 01969 624388;

East Witton & Thornton Steward: Mary Fawbert 01969 623007/ Karen Newsam 01969 622395;

Coverdale: Anne Readshaw 01969 640448

Methodist Minister: Rev Melanie Reed: 01969 623818; **RC priest:** Fr Michael: 01969 623141

Images:

Leyburn by Anthony Harrison [File:Leyburn.jpg - Wikimedia Commons](https://commons.wikimedia.org/wiki/File:Leyburn.jpg)

Viaduct crossing the River Calder at Whalley by Jonathan Watson

Nativity Public domain [Nativity silhouette | Public domain vectors](#)

Paw print by Chris Martin [File:Dog Paw Print.png - Wikimedia Commons](https://commons.wikimedia.org/wiki/File:Dog_Paw_Print.png)

Woodcock by Craig Nash [Woodcock Scolopax rusticola | 1st Year Woodcock in flight at... | Flickr](#)

Flock of wood pigeon by Andreas Tripte [File:Wood Pigeon Migration.jpg - Wikimedia Commons](https://commons.wikimedia.org/wiki/File:Wood_Pigeon_Migration.jpg)

Kingfisher by Mick Lobb [Kingfisher - River Ogmore © Mick Lobb cc-by-sa/2.0 :: Geograph Britain and Ireland](#)

Hedgehog by Mike Pennington [Hedgehog \(Erinaceus europaeus\),... © Mike Pennington :: Geograph Britain and Ireland](#)

Hedgehog in stained glass Brill church, Brian Ogilvie [Pin on Hedgies! \(pinterest.com\)](#)

Husky [Free Images : snow, winter, animal, pet, fur, young, outdoors, vertebrate, domestic, adorable, sled dog, siberian husky, alaskan malamute, dog like mammal, dog breed group, greenland dog, east siberian laika 2048x1536 - - 1342673 - Free stock photos - PxHere](#)

Helix Bridge by Nan-Cheng Tsai [The Helix Bridge | Helix Bridge, Marina Bay, Singapore | Nan-Cheng Tsai | Flickr](#)