



BRIDGE

November 2022

**Newsletter of the parish of Middleham with Coverdale,
East Witton & Thornton Steward**

Bridge over River Cover by D Pugh

To sign up for e-Bridge please email jervaulxliz@gmail.com

Letter From the Rectory – Christ the King *Rev Jeff*

I wonder how King Charles feels about becoming king? I would have thought that he must have mixed feelings. Becoming king means that his mother has died with all the grief he would feel. On the other hand, he has waited for this role for a long time and having waited so long to meet his destiny it might be ever so sweet for such a long wait. Then again, he is 73 years old. How many of us look to face a new challenge at that age?

Liz and I sometimes watch historic dramas on TV. A common theme that runs through these is that everyone wants to be king and when someone becomes king you can guarantee that someone else is plotting their downfall. When I watch these, I'm incredulous as to why anyone would have such an ambition for power when it usually means a tragic end. Maybe that's not always the case but it's only worth making a drama if there is a grizzly side.

Whilst the violence might have ended, the turmoil that there has been in Westminster most of this year shows that the desire for power, the perilous position of those in the top job never goes away. When we experience these things, we might think that it's never been like this before. Maybe not in our lifetimes but political turmoil is often the case.

In November we celebrate, if that's the right word, Guy Fawkes night, which is a stark reminder of far more brutal political turmoil in the past. When we eat baked potatoes and parkin in front of a comforting fire and enjoy spectacular fireworks with all the oohs and aahs of the night it's easy to forget the carnage that was planned and the brutality that was meted out on the perpetrators in punishment.

Amid all the upheaval, political turmoil and brutality, even if the brutality isn't physical violence, we can draw comfort from the little-known Christian festival of Christ the King on 20th November. This is the last Sunday of the Christian calendar before the church's new year starts on Advent Sunday (usually the last Sunday of November).

The theme of Christ the King is the story ending with Christ in his place as ruler over all creation. He is immovable, unlike human rulers, no-one can overthrow him. He is in the highest place and all human rule is accountable to its true king.



The nature of Christ's kingship is also very different to much human leadership. He doesn't concern himself with a Koh-I-Noor diamond crown but embraces a crown of thorns. Too often human leadership is self-seeking and uses positions of power for self-interest, and exploits those who are to be served and protected. Jesus showed a different way of being a king. He took the place of a slave and washed his disciples' feet. He took the place of the worst criminal when he was hung on the cross. He suffered that our sins might be forgiven, he died so that we might live and be free from guilt.

Therefore, when the world is in turmoil and unrest we don't need to be anxious but be comforted that there is one who loves us who stands above it, holds the chaos and leads us to a place of calm peace.

Verse of the month. Psalm 145:3-4

³ Do not put your trust in princes, in mortals, in whom there is no help.

⁴ When their breath departs, they return to the earth;
on that very day their plans perish.

~~~~~



If you are in need of food bags please contact -  
text/ phone 07796 988302  
Or pm Lorna Skelton on Middleham Residents  
Facebook page. All Confidential.

**Food Contributions:** There is a collection box in St Alkelda's, Middleham, if you are able to contribute an item or items of food for those in food need. Please leave them in the box at the back on the left as you go in. The doors are open daylight hours.

*Thank you so much to those of you who have made contributions. If you can donate 'just one thing' each week or month that would add to the collection available for those who need it.*



## Rural Outreach Information and Advice Bus

Citizens Advice will be at Middleham Key Centre  
on Thursdays 12.00 – 13.30

- 24<sup>th</sup> November
- 8<sup>th</sup> December

We provide free,  
independent and



impartial information and advice on the following matters:

Benefits; work; debt and money; consumer matters; family matters; housing; law and courts; immigration; and health

**HELPLINE: Citizens Advice Money & Benefits Advice Service, N Yorks**

Call 0300 3031 598 Monday to Friday 9.00 to 4.00

Email advice can be requested via the contact form on website [cany.org.uk](http://cany.org.uk)

**Extra Legal Help for North Yorkshire Residents** ... for those who need it to solve problems in their everyday lives, and support for those representing themselves in court. Help with issues around housing, family and discrimination.

### Office Opening times

**Northallerton** Mon & Thur 10 – 2pm Hambleton: 277 High St DL7 8DW. Tel: 01609 776551

**Richmond** Tuesday 10.00 – 14.00 Richmondshire: 23 Newbiggin DL10 4DX. 01748 823862

[www.citizensadvicehrs.org.uk](http://www.citizensadvicehrs.org.uk)

---

## Middleham News

### WIMS – Women in Middleham

**AGM: Tuesday 15th November** followed by a quiz and a bring and share supper. For further details ring Liz Stocker on 01969 625260

### Middleham Twinners group



...continues to go from strength to strength with a great turn out for our last event of cake and fizz at the Key Centre. Over £330 was raised and good fun was had by all especially our youngest members shown in the photo.

It was great to see so many members enjoying getting together for a couple of hours over yummy cakes and drinks. A special thank you to all our helpers and especially those who baked the splendid cakes and donated raffle prizes. We even attempted to zoom with a couple of members who were unable to be present.

Our next events include a special supper in the Wensleydale Hotel and a December quiz in the Key Centre. If you are interested in joining the group please contact

[lcmonaghan11@gmail.com](mailto:lcmonaghan11@gmail.com) 07503 075530

*Supported by The Two Ridings Community Foundation Grant which provides invaluable support to our events and activities.*

# St.Mary & St. Alkelda's Church, Middleham



## Tea & Cake with a Pre-loved Clothes Pop Up Shop

**Saturday 26th November 11am – 4pm**

**We will be serving tea, coffee,  
scones and cake,  
and good quality pre-loved clothes.**

**We would love you to join us.**



Funds raised will go to the Yorkshire Air Ambulance and St Alkelda's  
*If you have good quality preloved clothes to donate, please either leave  
them at the back of church or phone 01969 624388*

# Request for clothes for our Pre-loved Clothes Pop Up Shop

If anyone has any clothes, ladies, men's or children's, or accessories (bags, shoes etc) that are in **very good condition** but they no longer want, we would be very grateful for them.

Any money raised will go be shared between Yorkshire Air Ambulance and the church and any clothes left will be taken to the charity shop.

Clothes can be either left in Church from Sunday 20<sup>th</sup> November to Friday 25<sup>th</sup> November or you can take them to Tamarisk, Kingsley Drive, Middleham DL8 4PZ on Wednesday 23<sup>rd</sup> November.



Thank you in anticipation and we hope to see you on the day.  
More information: 01969 624388



## Update on the Future of Bridge

### Editor

Our new editor will take over in 2023 – more in a future issue....

### On line Bridge

Bridge is now only available on line: as an e-Bridge document direct to your email (please request at [jervaulxliz@gmail.com](mailto:jervaulxliz@gmail.com)) or access it via the Middleham Town Council website, or the parish website.)

Please consider printing out a copy for anyone you know who finds accessing technology difficult.

**Middleham and The Dales Local History Group**  
**Middleham Key Centre, Tuesday 15 November 2022 at 2.00pm**



**The Restoration of Scruton Station, the Heritage Education Programme  
and the Wensleydale Railway**

The Wensleydale Railway's Scruton Station won a Blue Plaque Award in 2015 for its restoration from dereliction to becoming 'the jewel in the crown' of the railway. Our speakers are all members of the Heritage Education Team at Scruton Station.

The education programme delivered to school groups at the station won the Marsh Trust Award for Museum Learning in 2017. The award is presented by the British Museum and the Marsh Trust charitable trust to recognise the achievement and contribution of volunteers in museums, galleries and heritage sites across the UK; recognizing their dedication, innovation and excellence in engaging with the public.

Members, new members and visitors are always welcome, annual membership is still only £10 for 9 meetings and visitors can attend for £3 per meeting. For more information contact Tony Keates 01969 640436, [dotandtonyk@btinternet.com](mailto:dotandtonyk@btinternet.com)



## **ALL GARDENS GREAT AND SMALL**

We are hoping to hold an Open Gardens and Allotments Day in Middleham next year, probably in June. The event will be an important fundraiser for Saint Mary and Saint Alkelda's church. If you would be kind enough to consider opening your garden or would be prepared to help on the day, please email me for details: [jonwatkins202@outlook.com](mailto:jonwatkins202@outlook.com) Thank you.

## Middleham Key Centre

Park Lane, Middleham DL8 4RA 01969 624002

Email: [office@middleham-key.co.uk](mailto:office@middleham-key.co.uk)

[www.middlehamkeycentre.co.uk](http://www.middlehamkeycentre.co.uk)



Middleham Key Centre

We are an information point & have a selection of brochures for the surrounding area, including bus timetables. We have recycling boxes, blue bags available and green gardening bags for sale.

Office opening hours: Monday 10.00am – 12noon, Wednesday 12noon – 2.00pm & Thursday 10.00am – 2.00pm. See [www.middlehamkeycentre.co.uk](http://www.middlehamkeycentre.co.uk) for further details.

**Middleham Antiques at the Cubby Hole:** Ring Angela for further details 07917 571180

**Yoga Class:** Tuesdays at 6.30pm – 8.00pm.

**'T' in the Afternoon:** Wednesdays 2.00pm – 3.30pm in the Garden room. All welcome and bring a craft if you wish.

**Coffee Mornings:** On Saturdays in The Garden room 10.30am – 12noon. Everyone welcome.

**Middleham Quilters:** Every Monday 11.00am – 2.30pm. Welcomes new members.

**Over 60s Luncheon Club:** Every Thursday at 12noon, price £7.00. Ring 01969 624002 to book or inform us you can't attend.

**Citizens Advice Pop-up Desk:** Thursday 24<sup>th</sup> November and 8<sup>th</sup> December - 12.30pm to 2.00pm in the Foyer.

**Middleham & Dales Local History group:** Tuesday 15<sup>th</sup> November at 2.00pm. Lecture "The restoration of Scruton Station, the Heritage Education Programme and the Wensleydale Railway" speakers Various members of the team. For further information ring Tony Keates on 01969 640436

**Women in Middleham AGM:** Tuesday 15<sup>th</sup> November at 7.00pm in Lady Anne Neville room. For further details ring Liz Stocker on 01969 625260

**Antique & Collectors' Fair:** Sunday 27<sup>th</sup> November from 10.00am – 4.00pm Refreshments available.

**Middleham Town Council:** The next Council meetings are on Wednesday 7<sup>th</sup> & 14<sup>th</sup> December.

Email: [office@middlehamtowncouncil.co.uk](mailto:office@middlehamtowncouncil.co.uk) Tel: 07531 580499 during office hours.

[www.middlehamtowncouncil.co.uk](http://www.middlehamtowncouncil.co.uk)

**Our Book Swap** is working well and has a lot of choice, but we can only accept *paperbacks* in reasonable condition. Thank you.

**Community Police:** If you need to contact our local PCSO ring 101.



### Date for your diary:

**Santa's Grotto** will take place on Saturday 10<sup>th</sup> December.

All children aged 9 and under, living in Middleham are invited.

Further details to follow.





ENGLISH HERITAGE

Come and join us for our Christmas celebration at

# Middleham Castle

Medieval home of King Richard III



Castle Hill, Middleham DL4 8QG

**December 10<sup>th</sup> and 11<sup>th</sup> 10am - 4pm**

**Free mince pies and mulled wine  
& maybe a song or two!**

**Entry to the gift shop is free.**

**A ticket is needed for entry to the grounds  
You do not need to book in advance.**

# Memorial Service

To remember loved ones and give thanks  
to God for their lives

**Sunday 6<sup>th</sup> November  
at 3pm  
at St Alkelda's, Middleham**

A chance to light a candle and remember those  
we have loved



*in Middleham*

**Town Carols – Friday December 2<sup>nd</sup> at 6.30pm**

The annual lighting of the Christmas tree ceremony will be in the market square on Friday 2<sup>nd</sup> December at 6.30pm followed by carols, readings and refreshment....

**Carols by Candlelight – Friday December 9<sup>th</sup> at 7.30pm**

Readings and carols for the Christmas season

**Event at the castle – 10<sup>th</sup> and 11<sup>th</sup> December**

See previous poster

**Christmas Day Service of Holy Communion for all the family 9.30am at St Alkelda's**

Join us for a service of celebration of the birth of Jesus. Bring one of your presents to show.

# East Witton News

**From St John the Evangelist:**

## **COFFEE DROP-IN**

Pop in for coffee & chat, in the Parish Room, on Wednesday 16th November, 10.30- 11.30am



*in East Witton*

## **CAROL SINGING**

Carol singing this year will be solely around East Witton Village and the monies collected will be shared between Martin House Children's Hospice and the upkeep of St. John's Churchyard. Further details next month.

## **CHRISTMAS COFFEE MORNING WITH STALLS**

Please join us for the Christmas Coffee Morning on Saturday 3rd December 10 a.m to 12 noon. Cake stall; cards; gifts; Raffle as well as refreshments on offer. You will be very welcome.

**CHRISTMAS EVE CRIB SERVICE** at St John the Evangelist at 3pm.

**CHRISTMAS EVE HOLY COMMUNION SERVICE** at St John the Evangelist at 7.30pm.

**EAST WITTON VILLAGE HALL**

# **BARN DANCE**

**AND  
SUPPER**

**Friday 11<sup>th</sup> November 2022**

**19.00 for a 19.30 start**

**Tickets £10 per person**

**Bring your own drinks**

**To tell us you are coming please contact:  
e.mail ewparishroomdiane@gmail.com  
phone Christine on 07999558213  
or Sheila on 01969 624919**

**All funds raised divided between  
Yorkshire Air Ambulance  
and  
East Witton Village Hall**

## **OLIO – a reminder**



Last month we heard how one of our local residents (Michele, left) has been joining in the movement to help to stop food waste. OLIO is for everyone, regardless of circumstances.

If you'd like to help stop food waste download the OLIO app and join in. There are other benefits too – apart from stopping good food going to waste, it will save you money and cut down the amount of CO2 that goes into the atmosphere. To try OLIO, or for more information:

<https://olioex.com>

# COVERDALE WOMEN'S INSTITUTE



Meeting at Coverdale Memorial Hall, DL8 4AY on 3<sup>rd</sup> Wednesday of each month at 7:30pm  
Contact Sara Baldwin-Cole 01969 640550

16<sup>th</sup> November – Annual General Meeting including crafts

14<sup>th</sup> December – Christmas Function (Location – Foresters Arms, deposits required)



### Seasonal Afternoon Tea

Coverdale Memorial Hall, Carlton in Coverdale, Leyburn, DL8 4AY

Monday 5<sup>th</sup> December at 2pm

£4 per person

Please book your space with Kimberley 01969 640487 or Julie 01969 640271



### January Jolly

Coverdale Memorial Hall, Carlton in Coverdale, Leyburn, DL8 4AY

Sunday 22<sup>nd</sup> January at 12:30am, doors open at 12:00

£5 per person, bring your own drinks

Book your tickets from Kimberley 01969 640487 by 16<sup>th</sup> January.

*This event is subsidised by Coverdale WI*



### 3rd February 2023 – Domino Drive: Doors open at 7 for 7.30pm start

Our Domino Drive is a lot of fun for the community, open to players and non-players.

Tickets are £2 on the door including refreshments

Raffle and Prizes for worst and best players plus junior prizes.

*This event is to raise funds for Coverdale WI community events*



Holy Trinity Church in Coverdale – Photo by Chris Hogg

A Roll of Honour in Coverdale Memorial Hall commemorates local men who served in the First World War. But who were the people behind the names? As time passes and memories fade, we are in danger of forgetting the men who left a peaceful life in the dale, often to encounter dreadful horrors in war. The vast majority returned to pick up their lives as best they could – rarely speaking about their experiences. What happened to them next?

With help from family members we have put together profiles of our WWI Veterans. It's a privilege to bring you their stories.

Please enjoy, reflect and remember.

*'All we have of freedom, all we use or know,  
This our fathers bought for us long and long ago.'*

Rudyard Kipling

COUNTRY BOOKS  
www.countrybooks.biz

COVERDALE WWI VETERANS REMEMBERED



Richard Walts



Harry Binks



Herbert Banks

## COVERDALE WWI VETERANS REMEMBERED



Oswald Utley



James Dawson



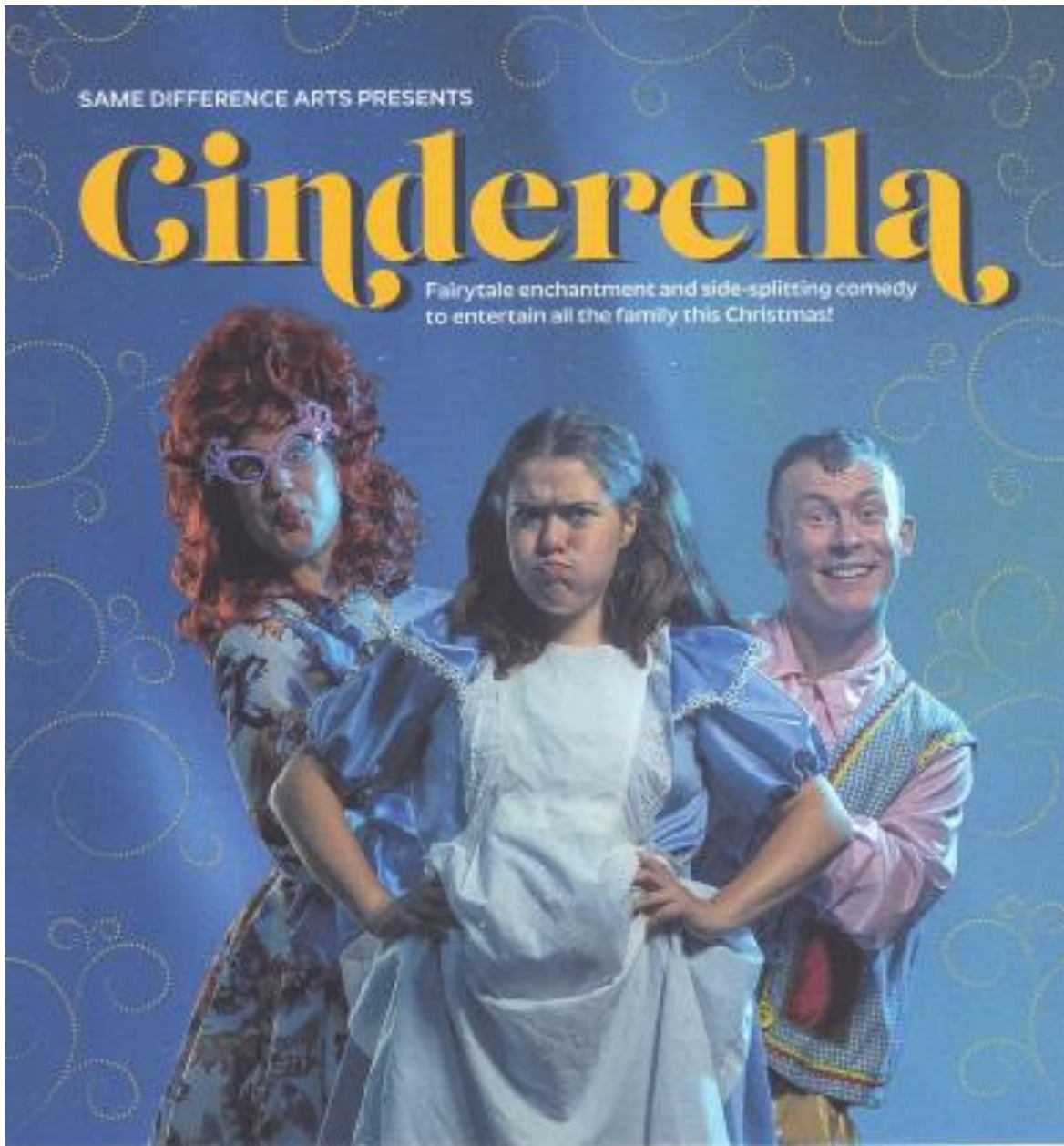
Albert Watson

Middleham and Dales Local History Group  
Edited by Val Slater

A read for the season of Remembrance.

Written by historian, Val Slater and available from her (£20) – phone

01609 770524



This hysterical family pantomime follows Cinderella as she struggles to outwit her nasty stepsisters, get to the Prince's Ball and save the enchanted forest. Combining fairy-tale enchantment with side-splitting comedy, this year's pantomime will leave the whole family entertained and enchanted!

**COVERDALE MEMORIAL HALL, CARLTON-IN-COVERDALE**  
**WEDNESDAY 28TH DECEMBER 2022**

**Matinee performance at 2pm (1:30pm for touch tour)**  
**Light refreshments, captioning and touch tour available**

**Tickets from: Heidi 640639, Howard 640689, Caroline 640663**  
**Adults £10, Children £5**



*Same Difference Arts try to make sure their show as accessible as possible by:*

1. *Providing a touch tour / familiarisation before the show starts. – This will last 20 minutes, and allows anyone with sensory access needs, to get a familiarisation of the show before they experience it. It's perfect for anyone hard of sight, and those on the autistic spectrum, but anyone is welcome to attend.*
2. *Use of captioning during the show. There will be at least 2 devices available to borrow for those that are hard of hearing so that they can read the script as the show is happening. (There is also a hearing loop available at Coverdale Memorial Hall)*
3. *Providing a quiet space or relax zone with bean bags available for any audience members that may want to go out and take a few moments.*



## Coverham Church stained glass window

by Barbara Thompson

*Last month we asked if anyone could explain the heraldry in this window. Val Slater of the Middleham and Dales Local History Group kindly got in touch to explain all. Huge thanks to Val for sharing her knowledge:*

The Middleham and Dales Local History Group undertook a survey of Coverham Church in 2009.

The window in question, known as The Coverdale Window, is in the west wall of the south aisle and is thought to date from the late 16th century. However, the stained glass dates from 1854/5 and was originally in the east window of the chancel. It was paid for by subscription organised by the Revd Roger Dawson Dawson-Duffield.

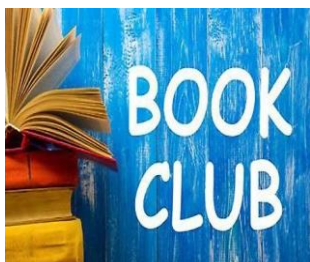
The left light bears the coats of arms of

Scrope, Topham, Nowell and Tomlinson.

The centre light has the arms of the See of Exeter, the title page of the Miles Coverdale Bible, and the seal of Coverham Abbey.

The right light bears coats of arms of Dearden, Dawson, Croft and Dawson-Duffield.

There are two other coats of arms on display in the spandrels of the windows in the south wall of the south aisle. These small shields are thought to be contemporary with the windows c.1320. They are not well executed but one is very similar to the Scrope coat of arms. The other has merited much discussion but we consulted Windsor Herald who advised that the Arms do not follow the rules of heraldry although they bear a resemblance to Arms relating to a family called Thornton.



## Coverdale Book Club

**Our next meeting is on Nov 8<sup>th</sup>: 'My Name is Why' Lemn Sissay**

Dec 13<sup>th</sup> The Man who Planted Trees by Jean Giono

We will be meeting at 11am at The Forester's Arms, Carlton

And lunch afterwards if you wish. Everyone welcome.

Please email: [dinah@travelcounsellors.com](mailto:dinah@travelcounsellors.com)



## Methodist Services in Coverdale:

Sunday 6 Nov 10.30am Melmerby Chapel Rev Philip Clarke  
Sunday 13 Nov 10.50 am St Botolph's Church, Horsehouse:  
Remembrance Sunday  
Sunday 20 Nov 10.30am Melmerby Chapel Liz Haythornthwaite  
Sunday 27 Nov 10.30am Carlton Chapel Mr Howard Thomas

*Walk with Jesus, witness to others, worship the Lord*



*in Coverdale*

**Nine lessons and carols at Coverham Church at 6pm on Sunday, 18<sup>th</sup> December.**

**Christmas Eve Holy Communion at 9.30pm at St Botolph's, Horsehouse.**

## Thornton Steward News

**Social Get-Togethers** on 1st Saturdays in the month, in The Institute, at 7.30pm.

<https://www.facebook.com/groups/908155472988654/>



*in Thornton Steward*

**Carol Service at St Oswald's, Thornton Steward at 6.30pm on Friday 16<sup>th</sup> December.**

A mixture of carols and readings for Christmas.

**Christmas Day Holy Communion celebration at 11am.**



**The Parish of Middleham with Coverdale, East Witton and Thornton Steward  
'Jervaulx Churches'**

**Private Prayer in Church:** Our churches are open daily for private prayer.

**Parish e-services: Sundays** - a weekly email service of worship

**Wednesdays** - a weekly email reflection Please email [jervaulxliz@gmail.com](mailto:jervaulxliz@gmail.com) for details.

**Sunday Worship** – everyone is welcome to all of our services

|                      |                |                                                 |
|----------------------|----------------|-------------------------------------------------|
| <b>Sunday 6 Nov</b>  | <b>11am</b>    | <b>East Witton church</b> Holy Communion        |
|                      | <b>3pm</b>     | <b>Middleham church</b> Annual Memorial Service |
| <b>Sunday 13 Nov</b> | <b>10.50am</b> | <b>Thornton Steward</b> Remembrance Service     |
|                      | <b>10.50am</b> | <b>Middleham</b> Remembrance Service            |
|                      | <b>10.50am</b> | <b>East Witton</b> Remembrance Service          |
|                      | <b>10.50am</b> | <b>Horsehouse</b> Remembrance Service           |
| <b>Sunday 20 Nov</b> | <b>9.30am</b>  | <b>Middleham Church</b> Holy Communion          |
|                      | <b>3pm</b>     | <b>East Witton Church</b> BCP Evensong          |
| <b>Sunday 27 Nov</b> | <b>9.30am</b>  | <b>Middleham Church</b> Holy Communion          |
|                      | <b>11am</b>    | <b>East Witton Church</b> Holy Communion        |
| <b>Sunday 4 Dec</b>  | <b>9.30am</b>  | <b>Middleham</b> Holy Communion                 |
|                      | <b>11am</b>    | <b>East Witton Church</b> Morning Worship       |



**New Bible study/ discussion group**

We are continuing with our new home group meeting at Revs Jeff and Liz's house – to discuss, agree and disagree or just listen. Come whether you are connected to a church or not. Fortnightly on a Monday 7.30pm – 9pm with coffee and cake to begin. Meetings in November are 14<sup>th</sup> and 28<sup>th</sup>. More details 01969 326069



## Weddings/ Funerals/ Christenings (baptisms)/ Confirmation

For more information please get in touch with the rectors, Jeff or Liz: 01969 326069 – or via contact details at end of Bridge.

Christenings (aka baptisms) take place during the main Sunday services



### Wensleydale Filling Station [Every second Friday - not August /Jan]

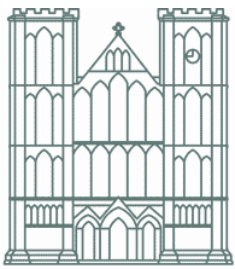
Thornborough Hall, Moor Road, Leyburn DL8 5AB 7.00 – 9.00pm

These are monthly meetings where we can celebrate our Christian faith in an informal manner and provide an opportunity to hear more about the love of God for our lives.

**Next meeting: Friday 11<sup>th</sup> November 2022 7pm – 9pm**

<http://thefillingstation.org.uk/station/wensleydale/>

Contact: 07714 204024 [mikehirst3@gmail.com](mailto:mikehirst3@gmail.com)



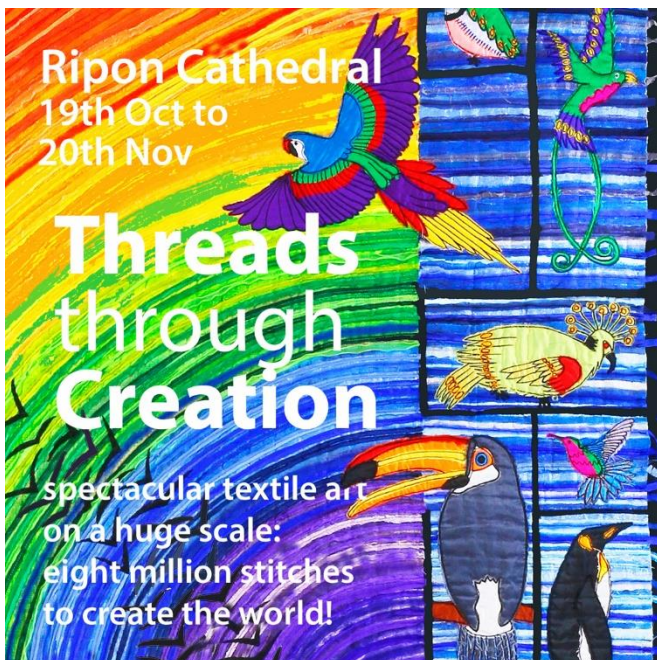
### Ripon Cathedral celebrates 1350<sup>th</sup> anniversary:

**Annual Advent Procession on Advent Sunday, 27th November, at 5.30 pm.**

A beautiful beginning and preparation for the season of Christmas.

**Services: Sunday Eucharist 10.30am**

**Daily services: [Worship](#) | [Ripon Cathedral](#)**



## ‘THREADS THROUGH CREATION’ EXHIBITION

“Threads through Creation” is a spectacular display of twelve huge panels of textile art. It is here at Ripon as part of a three year tour of twenty cathedrals.

The sequence of panels follows the description at the start of Genesis, the first book in the Bible. It tells the story of creation, of God creating the world and the universe in seven ‘days’.

Free admission. **Oct 19 – 20 Nov**

More details: [www.riponcathedral.org.uk](http://www.riponcathedral.org.uk)

# **COP 27 Sharm el-Sheikh Climate Change Conference 6 - 18 November 2022 – *daily prayers for the climate during COP27***

Christians across our diocese are being invited to join in a daily act of prayer for world leaders as they meet at Sharm El-Sheikh in Egypt to discuss policies and commitments to avert more climate breakdown.

A daily email will be sent out to subscribers during the two weeks of COP27 including a scriptural reflection, theme for the day and pointers to action and hope.

Written by Frances Bryant of St Mark's, Harrogate, the daily prayer bulletins draw on the prayers of children from the church, which express their hopes and fears for the future of humanity and all God's creatures.

The prayers were commissioned by the Diocesan Environment Worship Group for churches to use in the context of the current ecological and climate emergencies. "We need to see a significant uptick in transition to a low carbon economy, both nationally and globally, to prevent escalating climate chaos which brings suffering and displacement to millions of our global and local neighbours," said Jemima Parker, Environment Officer for the Diocese of Leeds. "It's critical that our leaders can step up to the challenge."

"As we pray during COP we will be joining millions of other people of faith who will be calling out for justice and action."

Read more and subscribe to the daily acts of prayer:

[Community and Global | The Diocese of Leeds, Church of England \(anglican.org\)](https://www.anglican.org/Community-and-Global/The-Diocese-of-Leeds)

*Or perhaps you'd like to read the following book and join in the book club discussion on line:*

## **Leeds Diocesan Eco Book and Film Group Programme October – December 2022**

**Tuesday November 22<sup>nd</sup> 10.00am - 11.30am Zoom online**

*Too Hot to Handle? The Democratic Challenge of Climate Change  
by Rebecca Willis 2020*

We shall look at how politicians deal with climate change; is there hope for a democratic | solution?



Please contact Christine Jack (leader & coordinator)  
[cajack1@gmail.com](mailto:cajack1@gmail.com) for Zoom links and further details

## Bird notes from Richard Wells

Thirty-plus years ago, when we first arrived here, I would go out into the garden after dark on clear, frosty evenings in early October, look to the stars and listen. It wouldn't be long before I was rewarded with a squeak, then another and another. This would happen for several evenings, whenever there was a frost.

The "squeaks" were the call of redwings (below) migrating from their Scandinavian breeding grounds to the larder of plenty that existed here. Come daylight they would feast on hawthorn and holly berries and then when the bushes were depleted by all those hungry mouths, sometimes hundreds at a time, they would move on further west to Cumbria and then even later to Ireland.



That doesn't happen now because we just don't get frosty evenings in early October anymore. Redwings and their close cousins, fieldfares (below left), now don't arrive in any large numbers until November. I guess they can find enough to eat in Denmark or Germany because the cold has yet to reach there, so why bother with an exhausting flight across the North Sea until they have to. Climate change is almost certainly responsible.



I was rewarded with a sighting of a lone redwing in Cover Gorge on Oct 15 but that is now the exception which proves this new rule.

In other news, a chiffchaff (right) was in an East Witton garden on Oct 3. Was this one of our birds migrating late or a bird which bred in somewhere like Siberia and has come to us for winter? I suspect the latter. A flock of 140 curlew were seen feeding near Jervaulx a few days later and on the same day a great white egret flew over the River Ure below Thornton Steward.



Your sightings are welcome at [rmwellsew14@gmail.com](mailto:rmwellsew14@gmail.com)



## Biodiversity in the parish: Waxcap fungi



To the left are some examples of waxcap fungi found by one of the parish churchwardens, Anne Readshaw. You can see:

Golden  
Meadow  
Snowy  
and Parrot

Such fungi like undisturbed, nutrient-poor grasslands like ancient pasture and other land that hasn't been ploughed or fertilised, as well as sand dunes and heathland. As a result, many species are rare and hard to find but some grow much closer to home – you can sometimes see them in garden lawns, grassy churchyards and cricket pitches as long as the conditions are right. If you find them, their presence tells you that you're somewhere special - a high quality 'unimproved' grassland habitat that is generally free from chemicals and artificial fertilisers.

The UK is an important place for such fungi but due to changes in agriculture some are now endangered.

There are many varieties of waxcaps, many beautiful in colour. You can encourage them by not enriching your soil or grass with fertiliser and by clearing away grass clippings.



The Federation of Middleham (VA) and Spennithorne (VC)  
CE Primary Schools  
Executive Headteacher – Mrs Marie Mann  
**A PLACE TO LEARN, LOVE & GROW**

Middleham: [01969 623592](tel:01969623592) Spennithorne: [01969 623474](tel:01969623474)

What a wonderful half term we have had - here are a few of the things we have enjoyed:

**Harvest Celebration and Federation Day**

Thank you to Rev'd Liz Moody and Rev'd Jeff Payne for welcoming us at St Alkeldas church, also thank you Rev'd Chris Lawton for joining the service. What a wonderful Harvest Celebration it was, well done to all involved.



Thank you from the School Council for your generous donations for the local food banks (the Middleham based emergency provision and Storehouse in Richmond).

**KS2 Tag Rugby**

The children in Sycamore and Oak Class ventured to Wensleydale Rugby Club to play in the Cluster Rugby Tournament. All the children showed resilience, super teamwork and determination throughout the morning. We also came back with a trophy and a very happy winning team! We are really proud of all the children for the outstanding effort shown – well done team FEDMAS!



**Eco Club**

The children in Eco Club have been working on increasing the biodiversity of our school site at Middleham. This week they made seed bombs to launch into the wild grass and started a flower border to plant bulbs for spring.





# THE WENSLEYDALE SCHOOL & SIXTH FORM LEYBURN

## Learning Modes at The Wensleydale school

As we are now at the end of the first half term, we have started the academic year with a raft of improved teaching and learning experiences for our students. This year we have seen the launch of Learning Modes in all classrooms. Mr Barnett-Assistant Head was sent on secondment to Bristol for 6 weeks in the summer, this placement was to enable us to widen our understanding of educational philosophy and work with an academy chain to further enhance our classroom practices. There is strong educational research that suggests this approach, which we have called Learning modes, will allow students to develop a deeper understanding of taught material.

There are now 4 Learning modes used in each lesson across our school. The first is Quiet Pairs or Groups. This is used for paired discussion using a quiet voice just for your groups, where we respect opinions and are ready to stop, when the following cue is given 'teacher hand up, and says 321'.

Next Respectful Whole Class, which uses the same cue of 'Teacher hand up, 321' and we achieve a 'quality audience'. Quality audience is having the whole class focused, eyes towards the teacher, pens down and ready to ask or answer a question. Students are learning how to SHAPE their answers, by speaking in full sentences with hands away from their face, never mumbling but projecting answers clearly and loudly for the whole class to hear. It is also important that students make eye contact and have positive body language, face forward, no fidgeting, empty hands, and an upright posture.

Individual learning is the third mode, which is designed to allow everyone the space and time for individual work free from distraction. This mode focuses on a silent environment in which students work on their own, using resources to help and putting a hand up for teacher help.

Finally, the Assessment conditions mode. Again use of silent work and encouragement to attempt every question, using all the time available, no turning round - eyes on work only and allowing time for reading through work and checking for Spelling and Grammar.

The next step in our learning journey has begun...

Julia Polley, Headteacher

The Wensleydale School and Sixth Form 01969 621007 07808209365



### Leyburn u3a Group:

at the Arts and Community Centre, Leyburn

**Friday 18<sup>th</sup> November 18th:**

Helen Keep: The Wensleydale Dormouse Project.

Meetings: 3<sup>rd</sup> Friday of every month at 10am.

Visitors are always welcome.

## LEYBURN ARTS & COMMUNITY CENTRE

Tickets / Info: **01969 624510** [leyburnartscentre.com](http://leyburnartscentre.com)

All tickets must be bought in advance – phone the office Mon-Fri 1-4pm)



### CINEMA (£6, or 60+/U14 £5)

**FRI 4 NOV 6pm The Worst Person in the World (15) 2hrs 8m**

**FRI 11 NOV 6pm Benediction (12) 2hrs 17m**

**FRI 18 NOV 6pm The Railway Children Return (PG) 1hr 35m**

**FRI 25 NOV 6pm Where the Crawdads Sing (15) 2hrs 5m**

### OTHER EVENTS & NEWS

**THU 3 NOV 7pm Live Event Cinema: The Seagull £15 (Vols £7.50)**

### FRENCH FILM FESTIVAL (£6, or 60+/U14 £5)

**TUE 15 NOV 7pm Bloody Oranges (18) 1hr 42m**

**TUE 22 NOV 7pm Vicky & Her Mystery (PG) 1hr 24m**

**TUE 29 NOV 7pm Children of Paradise (U) 3hrs 2m (Interval & Snacks)**

### DECEMBER HIGHLIGHTS

More from our French Film Festival, plus

**SAT 10 DEC 7:30pm Christmas Show with Colin Bailey etc. £12 (Vols £6)**

### Leyburn Arts & Community Centre: News *Jeannie Bishop*

September saw the installation of our new sprung floor in the Studio which will benefit young dancers by being kinder on the ankles.

At the opening event demonstrations were given by Dales School of Performing Arts & two volunteers, Joan and Carl from the Sequence Dancing sessions held in the Centre.

We are very grateful for all contributions to the cost.

Our next major project is the Community Shed and the plan is now for a multi- use shed with disabled access. It seems a long time in the planning, Watch this space!

See our website for more information or call in. As always we are pleased to welcome prospective volunteers so if you would like to know more, pop in to see us.

[www.leyburnartscentre.com](http://www.leyburnartscentre.com) has details of all groups and events, or pop in to collect a flyer.



## The Knit'N Natter group

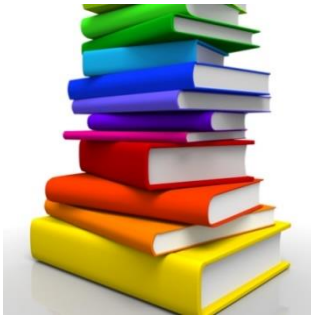
### at Leyburn Arts & Community Centre

... are busy knitting and crocheting poppies for the British Legion display being planned for Leyburn. If anyone would also like to contribute they could drop their poppies into the Centre, or to the British Legion, or join the sessions which **meet on a Wednesday fortnightly from 7pm - 9pm**, coffee and biscuits included, fee £2

towards the Arts Centre's funds.

For future dates of Knit'N Natter contact 01969 624510.

## Leyburn Community Library Services



Mondays 10am - 4pm

Fridays 10am - 4pm

Tuesdays 10am - 6pm

Saturdays 10am - 12noon.

**Public computers** available when library is open, no booking required

**Technical advice** Tuesdays 12.30pm - 2.30pm, drop-in, or call 01609 535971 to book a slot.

**Storytime** Stories and craft activities for 0-5 year-olds:

Weekly on Saturdays 10.30am - 11.15am- look at the Library Facebook page to check

**Book Reservations** etc Books can be reserved and renewed online via your library account or by phoning 01609 535971 - direct line to the library desk at Leyburn.

**Bellerby Study Group:** meets on Wednesday evenings at 7.30pm  
in the Memorial Hall, Church Street, Bellerby DL8 5QL

Talks are followed by refreshments and a chance to chat.

The cost for this term will be **£10** to join as a member for the 8 talks scheduled for this term, or **£3** for a single visit.

2 Nov Ray Clarke

The North York Moors Association

9 Nov Tony Keates

Watermills In Wensleydale

16 Nov Chris Freeman

Volcanoes

23 Nov Richard Taylor

The Victorian Vegetable Garden

(Ripon Museums)

30 Novr Chris Lloyd

Lewis Carroll: Curiouser and Curiouser Connections

(D&S Times)

Any queries can be directed to Steve Akrill on 07812 983283





**Which Bridge?** *Answer at the end of Bridge*

## Next Bridge:

Please send any items to: [bridgemagazine@outlook.com](mailto:bridgemagazine@outlook.com)

by the **deadline: Sunday 20<sup>th</sup> November**

**PLEASE NOTE THAT DECEMBER/JANUARY IS A DOUBLE ISSUE so please send information for both December and January.**

It may sometimes be necessary to edit articles. Sometimes space is limited so not all articles can be included. Please note: The views expressed in the articles are those of the author.

## ADVERTS

*If you would like to advertise in Bridge, please contact [bridgemagazine@outlook.com](mailto:bridgemagazine@outlook.com)  
There is a small fee which contributes to our ability to produce/ distribute Bridge for free.*

### CARE PROVIDERS

- ❖ **PREMIERE CARE** – Family run private domiciliary care agency supporting our clients with a bespoke home care service. Based in Leyburn, we provide hourly care locally and live-in care to clients across Yorkshire. For an informal chat about our service please call one of our management team on 01969 622499.
- ❖ **The MILLINGS RESIDENTIAL CAREHOME**, North End, Bedale. Rated as Outstanding by CQC our family owned carehome, based in beautiful surroundings, puts you at the heart of our care. Call us anytime on 01677 423635 or visit our website [www.residential-homes.net](http://www.residential-homes.net)

### BUILDERS/ SERVICES FOR THE HOME

- ❖ **STONESCAPES HARD LANDSCAPING AND BUILDING** All aspects of traditional building works including barn conversions, roofing, porches, extensions, underpinning. Patios, paths, driveways, walls, dry stone walling, steps, excavations, fencing, turfing, low maintenance gardens. Frank Johnston 01969 640457 or 07803 735000 [www.stonescapes.com](http://www.stonescapes.com) email [frank@stonescapes.com](mailto:frank@stonescapes.com)

- ❖ **P H MACHIN LTD.** Plumbing and Heating Engineers serving Leyburn and the Dales. GASSAFE Reg. Oftec Reg. WRAS reg. Biomass approved. All aspects of plumbing and heating covered: Boiler & central heating installations, full bathrooms and wet rooms, inc disabled wet room adaptations. Power flushing central heating systems, unvented hot water cylinders, air & ground source heat pumps, underfloor heating systems. Grant G-one. 01748 833316. email: [audrey.machin@btinternet.com](mailto:audrey.machin@btinternet.com)
- ❖ **THE DALES SWEEP - MARTIN TRADEWELL** A member of the Guild of Master Sweeps. A prompt, reliable service from your experienced Dales sweep. Qualified & insured. Bird guards/cowls fitted. Sweeping Coverdale, Wensleydale & Swaledale. Phone: 01969 640099.
- ❖ **ARTISAN LOCKSMITHS your local locksmith in Bedale** - Looking for domestic and commercial locksmiths? Call the local locksmiths at Artisan Locksmiths on 07595 749 763 for services in Bedale and across North Yorkshire.
- ❖ **TheLogCompany.com SEASONED HARDWOOD LOGS.** Your local supplier of the finest quality kiln dried, hardwood & softwood logs with free delivery. Log stores, kindling, briquettes, smokeless fuels, fire bowls and wood fired hot tubs available to buy and hire! Order online TheLogCompany.com [www.TheLogCompany.com](http://www.TheLogCompany.com) or call 01748 889298

## HEALTH

- ❖ **ANDREW R. WAITES** MSSCh.Dip.Pod.Med.MBChA.IOSH.PJ - **Podiatry Clinic** - Appointments available with Rosemary Gunner S.A.C. Dip. FHP 01969 623189 to book. 5 Market Place, Leyburn DL85BJ (Next door to Kim's Coffee Shop)
- ❖ **THE HEALING COLLECTIVE** Encouraging health & wellbeing with a range of therapies including Counselling, Reiki, Bach Remedies, Reflexology, Indian Head Massage and EFT('tapping').We can also treat animals of all shapes and sizes with problem behaviours. Coach House, Berry's Farm Shop and Cafe, Swinithwaite, DL8 4UH.  
Tel: 0845 474 2383 or 07981 908717 Website: [www.healingcollective.co.uk](http://www.healingcollective.co.uk) e mail: [info@healingcollective.co.uk](mailto:info@healingcollective.co.uk)

## PRE-SCHOOL

- ❖ **Kidz Day Nursery & Preschool** – Places for children 3 month to 8 years. Open 51 weeks per year. 7.30 – 18.00. Before and After school club, and holiday club. Contact us to arrange a show round of this amazing setting  
01969 622833 or email [info@kidzdaynurserymiddleham.co.uk](mailto:info@kidzdaynurserymiddleham.co.uk)
- ❖ **Harmby Under 5's Pre-School based at Spennithorne School.** We have funded places available for 2, 3- & 4-year olds. Our Ofsted report was rated 'Good' in May 2022. We have qualified, experienced staff. We are open daily in term time from 8.45am - 3.15pm. Contact us on 07708 305805 or email: [harmbyu5s@outlook.com](mailto:harmbyu5s@outlook.com)

## LOCAL SHOPS

- ❖ **CENTRAL STORES, Middleham. Grocers, Newsagents + Off Licence** Open "Till Late" everyday. (01969) 623224
- ❖ **VICTORIA'S LINGERIE Stockists** of Fantasie, Triumph, Sloggi, Freya & many more. Free fitting service. 11 High St. Leyburn. 01969 622102.

- ❖ **HOUSE and HOME** Market Place, Leyburn. **HOUSE and HOME** Town Hall, Leyburn **HARDWARE, Gardening Items, Tools, GIFTS, Camping & Caravan Accessories.** Plus the biggest **TOYSHOP** in the area. Tel. (01969) 622150.

## LEGAL/FINANCIAL

- ❖ **WENSLEYDALE PAYROLL** – a bespoke payroll service to small businesses. Tel: 07810 521982 or email [wensleydalepayroll@outlook.com](mailto:wensleydalepayroll@outlook.com) [www.wensleydalepayroll.co.uk](http://www.wensleydalepayroll.co.uk)
- ❖ **DAWN CLARKSON ASSOCIATES** Accountants and Business Advisors. Established reputation for serving small businesses. Tel: 01969 624999 [www.dawnclarkson.co.uk](http://www.dawnclarkson.co.uk).
- ❖ **JOHN G HILLS & PARTNERS** - Our team of qualified chartered surveyors, valuers, land and estate agents are happy to advise on all land and property related matters including: Property sales, valuations and surveys, estate management and lettings, landlord and tenant, rent reviews, agri-environment schemes & planning and development. 01969 623109 [www.jghills.com](http://www.jghills.com)

## CAFES/ LOCAL ATTRACTIONS

- ❖ **THE WENSLEYDALE EXPERIENCE.** Yurts, Berry's Farm Shop & Cafe, Dales Walks, Farm Tours, Events and more! We launched our own Yurt so you can come and experience the best of the Yorkshire Dales. Or visit our award-winning food and farm shop! The Wensleydale Experience is about giving you the chance to experience the best of the Yorkshire Dales. Everything we do is focused on sharing with you a sense of who we are, & what it feels like to live and work in Wensleydale. [enquiry@wensleydale-experience.com](mailto:enquiry@wensleydale-experience.com)

## TRAVEL SERVICES

- ❖ **DINAH@TRAVELCOUNSELLORS.COM** “Your Local Travel Agent” serving the Dales and Beyond. Full financial protection. Quality independent service nearly 40 years’ experience. Call Dinah on 01969 678060 or email.

**ANSWER: Which bridge?**

**Ponte Vecchio, Florence, Italy**

## Contacts:

Revs Jeff and Liz: 01969 326069 [jervaulxjeff@gmail.com](mailto:jervaulxjeff@gmail.com) [jervaulxliz@gmail.com](mailto:jervaulxliz@gmail.com)

## Churchwardens:

Middleham – Margaret Brabban 01969 624388;

East Witton & Thornton Steward: Mary Fawbert 01969 623007/ Karen Newsam 01969 622395;

Coverdale: Anne Readshaw 01969 640448

**Methodist Minister:** Rev Melanie Reed: 01969 623818; **RC priest:** Fr Michael: 01969 623141

## Images:

Scruton Station [Scruton - Wensleydale Railway \(wensleydale-railway.co.uk\)](http://wensleydale-railway.co.uk)

Santa in grotto [Santa Claus In His Grotto Free Stock Photo - Public Domain Pictures](#)

Redwing by John K Thorne [Redwing in The Garden | The redwing is most commonly encount... | Flickr](#)

Fieldfare by Ian Kirk [File:Fieldfare with bait! \(8414622998\).jpg - Wikimedia Commons](#)

Chiffchaff by Alan Piper [Chiffchaff \(Phylloscopus collybita\) | PapaPiper | Flickr](#)

Flock of curlew by John Shortland: [Exmoor: Curlew over Porlock Weir | www.johnshortlandwriter.c... | Flickr](#)

Bridge by Ray [File:The Ponte Vecchio "Old Bridge" and Arno River, Florence, Italy.jpg - Wikimedia Commons](#)