



Middleham Herald



Halloween Edition, October 2020



This Middleham Herald has been produced and distributed in line with current Royal Mail delivery measures. If you would prefer to receive future editions by e-mail, please contact the Town Clerk with both your e-mail and postal addresses.

From the Mayor

As 2020 progresses and we move into the autumn we can reflect on the spring and summer of this very challenging year and maybe will find it hard to be positive about the future. Our elderly residents particularly have missed out on much loved community activities, the weekly lunch club, the popular outing to the coast and our Christmas Activities are looking unlikely at the current time including Santa's Grotto and Carols round the tree. We still need to look out for each other. We have seen great community spirit at work in Middleham and I hope this will continue. A friendly smile, a socially distanced chat, helping a neighbour, maybe even picking up some litter, all help to make our lovely town a great place to live.

If it's hard to feel positive but think how fortunate we are to live in such a beautiful area of the country and make the most of a close-knit caring community.

Councillor Sue Fairhurst, Mayor

Volunteering in Middleham

Our band of local volunteers are still ready and waiting to help anyone who needs it, whether this is to collect a prescription, do some shopping, provide a lift to an appointment or whatever other task you may not be able to do by yourself due to the current restrictions or another health problem. A big thankyou to them all.

If you need help, don't be shy, just get in touch - in confidence - with me, with either of the Vicars or with Councillor Nigel Hopper – our details are at the end of this Herald.

Councillor Honor Byford, Deputy Mayor

Hospital Transport – new arrangements for transport to Medical Facilities and Hospitals

People in the area, with appointments at the various hospitals in our district, have been provided with transport to their

appointments by the NYCC Transport Fleet arranged by the Leyburn Hub at no cost. Because the children are now back at school the NYCC Transport Fleet main function is to provide school transport, they are no longer able to guarantee to transport people to hospital too.

As a result, new arrangements have had to be introduced from Monday 26th of October 2020.

The new arrangements.

1. Parish Support Groups should continue to provide transport for people who wish, or are asked to, attend local medical and dental practices.

2. When a person has an appointment with one of the hospitals in our district, usually Darlington, Northallerton, Middlesbrough, or Harrogate, and asks for assistance, then the local support group or Leyburn Hub will:

- Firstly, establish that the person requesting transport is unable to transport themselves and do not have family or friends that are able to provide transport.

- Next, ask the person to contact the Patients Transport Service (PTS) which is provided by Yorkshire Ambulance Service **tel 0300 3302000 between the hours of 08.00 to 18.00.**

This information should be provided on the appointment letter (but it isn't always).

The criteria for the PTS to provide transport is "to and from hospital outpatients clinics" "to and from community-based care" "admission to or discharge from hospital" "regular life-saving treatments such as renal dialysis or chemotherapy"

They are not accepting anything but the most critically ill people within these criteria or if other forms of transport are impossible because of wheelchairs or oxygen requirements.

The PTS is reluctant to talk to anyone other than the patient who must have the appointment details available when they contact the PTS. The PTS is free of charge.

- If the above cannot be arranged and if the Middleham Support Group is able to provide transport using a volunteer, they will but this is not always possible.

- Assuming that none of the above is possible, the Parish Support Group Coordinator, or the person themselves, should contact the **Leyburn Hub on 01969 624510** or admin@leyburnartscentre.com .

The Hub has arranged to provide transport via a NYCC Transport Service run by volunteers but this service is not free of charge. For journeys of up to 44 miles the charge is 0.45p per mile. For journeys of more than 44 miles the charge is capped at £20.00. The driver will give the person they are transporting a bill and expect them to

pay, on completion of the journey, by cash or cheque.

David Poole, Leyburn Hub Coordinator

Hospital Transport For Middleham:

If you need transport to a hospital appointment, please do use the system shown above or contact one of the Middleham Coordinators and we will try to help. Transport to Leyburn is usually readily available. So far, we have also covered any hospital appointments the PTS cannot provide.

Cllr Honor Byford

Town Council update

David, our Clerk, is continuing to work from home and can be contacted by email office@middlehamtowncouncil.co.uk and phone 07531 580499.

Proposed reorganisation of local government in North Yorkshire.

You may have read or heard that there are proposals to reorganise local councils in North Yorkshire and to elect a single Mayor for North Yorkshire and York. The Parish and Town Councils would continue as they are and could even take on delivering extra services if they wish. Your Town Council has studied the proposals from the County Council – for one super council based in Northallerton – and from the District

Councils – for two larger area councils, one east of the A1 to the coast and one west of the A1 through to Lancashire. We held an online Town Meeting about this and have spoken with numerous residents to see what people think.

The overwhelming responses here in Middleham have been as follows:

- Why is this even being looked at in the middle of a pandemic?
- This was looked at before and thrown out, nothing has changed so why are we going over it all again?
- It will cost a fortune to reorganise all the councils and for what? That money could be better used for local communities and services.
- County Hall don't listen to us now so why will they listen if they are running everything?

As your councillors, we consider this is completely the wrong time to even consider such a major reorganisation, which will be costly and is already taking up a lot of money and council staff time. All seven District Councils are opposed to the one super council proposal. We also think it is a bad idea because it will:

1. Over centralise all policy making and funding, making it remote from local communities

2. Reduce your access to councillors as there will be far fewer councillors covering a much larger area
3. Reduce local representation with all policies being decided in Northallerton for the whole of North Yorkshire, including for Planning Policy, Social Housing and for Street cleansing and Environmental services such as Environmental Health.

We believe that strategic matters such as Highways and Education are best delivered county wide but local services such as Planning Policy and Social Housing are best decided more locally at District level. What is needed for Scarborough or Selby is not the same as what is needed in Wensleydale and Richmondshire.

We also believe that concentrating so much power in the hands of a much smaller number of Councillors is undemocratic and will in particular reduce the mixture of political parties and independent representative views that we currently have in Richmondshire.

We think now is the wrong time to even consider any reorganisation. We also think the current system works well and does not need such a drastic and expensive change. If government insists on changing things, we will support the two councils East/West

proposal as less damaging to rural communities than the single Super Council idea. We have sent a response explaining our views and reasoning to the district and county councils, to the government and to our local MP, Rishi Sunak.

You can read the entire letter on the town council website:

www.middlehamtowncouncil.co.uk

Coronavirus (COVID-19) and domestic abuse

Coronavirus isolation can cause additional anxiety for those at risk of domestic abuse. Anyone can be a victim, regardless of gender, age, ethnicity, socio-economic status, sexuality or background. It can be between partners or parents to children, and by children to parents. Older people are also at risk.

What is domestic abuse? It is not only physical violence but can include coercive control, economic abuse, online abuse, threats and intimidation, emotional and sexual abuse.

If you believe that you, or someone else, could be a victim, look out for signs: do they, or you, seem withdrawn, or isolated from family and friends? Showing bruises, burns or bite marks? Are their finances controlled or not given enough to buy food or pay bills? Maybe not allowed to leave the house, go to college or work, or having internet or social

media use monitored, their texts, emails or letters read? Other signs include being repeatedly belittled, put down or told they are worthless, being pressured into sex and told that abuse is your fault, or that you're overreacting.

What to do: The first thing to do is remember that domestic abuse is not right and there is help. This help is open to victims and there is help too for abusers. If you need to leave your home to escape domestic abuse, you may ignore any household isolation instructions as a result of coronavirus.

Report it. If you are in immediate danger, or you believe there is an immediate risk of harm to someone, call 999 and ask for the police. If you are unable to talk on the phone, call 999 and listen to the questions from the operator and, if you can, respond by coughing or tapping on the handset. Help. National Domestic Abuse Helpline (open 24/7) Phone/TypeTalk 0808 2000 247 <https://www.nationaldahelpline.org.uk/>

Women's Aid

<https://www.womensaid.org.uk/information-support/> live chat at <https://chat.womensaid.org.uk/>

Men's Advice Line 0808 801 327

<https://mensadvice.org.uk/>

Hourglass (for concerns about older people) 0808 808 8481 <https://wearehourglass.org/>

NSPCC helpline - advice and support for anyone with concerns about a child 0808 8005000 <https://www.nspcc.org.uk/>

Childline - help and support for children and young people 0800 1111 <https://www.childline.org.uk/>

Respect. Anonymous and confidential helpline for men and women who are harming their partners and families, and anyone concerned about perpetrators. <https://respectphonenumber.org.uk/> 0808 802 4040

This guide is based upon the gov.uk website at <https://www.gov.uk/guidance/domestic-abuse-how-to-get-help#get-help-if-you-or-someone-you-know-is-a-victim> where further links and guidance may be found.

Now, on a lighter note:

The origins of Halloween

Did you know that Halloween started in this country, Ireland and Northern France? It arrived in America with migrants from these countries!

Halloween's origins date back to the ancient Celtic festival of Samhain (pronounced sow-in). The Celts, who lived 2,000 years ago, mostly in the area that is now Ireland, the United Kingdom and Northern France, celebrated their New Year on 1st November. This day marked the end of summer and the harvest and the beginning of the dark, cold winter, a time of year that was often

associated with human death. Celts believed that on the night before the New Year, the boundary between the worlds of the living and the dead became blurred. On the night of 31st October they celebrated Samhain, when it was believed that the ghosts of the dead returned to earth.

Roman Influences

By 43 A.D., the Roman Empire had conquered the majority of Celtic territory. In the course of the 400 years that they ruled the Celtic lands, two festivals of Roman origin were combined with the traditional Celtic celebration of Samhain.

The first was Feralia, a day in late October when the Romans traditionally commemorated the passing of the dead. The second was a day to honour Pomona, the Roman goddess of fruit and trees. The symbol of Pomona is the apple, and the incorporation of this celebration into Samhain probably explains the tradition of bobbing for apples that is still practiced today on Halloween.

Letter from the rectory

All Saints and Hallowe'en

by Rev Liz

The nights are darker and we have a long winter ahead of us, especially this year. In days gone by, people feared that this season of darkness gave opportunity for

malignant powers to come among them, to harm them and disrupt their lives. And so, at the end of October, began rituals to try to placate these powers – things that we recognise today in the events of Hallowe'en – such as dressing up as demons and hobgoblins (this was an attempt to deceive the powers of darkness into believing that the person dressed up was 'one of them' and so wouldn't attack them) and putting lights outside to ward off anything evil, which continues today in the lights put in pumpkins. In my childhood turnips were used. Have you ever tried to scoop one of them out? Not easy! Trick-or-treat (unheard of in my childhood upbringing) has its roots in a tradition that began centuries ago in Ireland when groups of farmers went house to house to collect food and materials for a village feast and bonfire. Undoubtedly the fear that people had of evil spirits etc sometimes led them to perform practices which we find abhorrent (animal and human sacrifices – the derivation of bonfire is bone fire), and the deep superstitions that they held (and still we as human beings are subject to) often caused harm.

In an attempt to dispel this fear, and to offer some hope to people, Pope Boniface IV, in the 7th century, introduced the feast of 'All Saints' to honour saints and martyrs. Feast days in those times were great occasions of

celebration – both spiritually and physically. So there would be rejoicing and thanksgiving in communities, where God would be praised for the saints and martyrs for their example as people who had overcome the powers of darkness through their service, and often death, in the faith of Christ. And this would be accompanied by a great feast. It was an encouragement to the people that death and darkness had been overcome in the resurrection of Jesus, and that the light could not be extinguished.

As I write this, I am thinking what a great idea it would be to have a great big feast to celebrate All Saints Day like in days gone by – but with the current restrictions, community feasts are sadly not possible. We do, however, each year around All Saints Day, hold a special service to remember loved ones, and to uphold the hope that they are with God in glory. Though often tinged with sadness because we see them no longer, we have the hope that in Christ they are celebrating in the great feast in heaven and for that we give thanks.

Annual Memorial Service

All Saints, Sunday 1st November, 3pm St John the Evangelist East Witton

Please phone 01969 623007 or email: m.fawbert31@btinternet.com if you would like to go

Please also give the names of those you would like to be remembered.

Remembrance Day Services will take place!

Sunday 8th November 10.55am

Please meet by 10.55am to begin our acts of remembrance, which this year will be outdoors with no services in churches.

Middleham – war memorial in St Alkelda's churchyard

Please bring a mask/ face covering

'Walk of 6'

The rectors, Jeff and Liz, would love to invite you on a socially distanced 'Walk of 6'. We are doing a series of walks of either an hour or two hours, and a few shorter strolls too for those who can't go too far.

With current regulations – we are limiting numbers to a maximum of 6.

If you would like to come at some point, please email jervaulxliz@gmail.com or phone 01969 326069 and we'll let you know when a walk is coming up. We'd love to see you. We know walking is good for body, mind and spirit. Well behaved dogs are welcome too!

Church Funds

With public worship suspended and fundraising events not able to take place there hasn't been the opportunity for people to donate as there would otherwise have

been. If you would like to donate, you can do so online. Thank you!

Middleham:

<https://www.jervaulxchurches.co.uk/middleham.php>

Rev'd Liz

Church Information:

Services - we do two services a week by email - on Wednesdays and Sundays. If you would like to be added to the mailing list please contact jervaulxliz@gmail.com

Prayers - As a church community we continue to hold the whole parish in our prayers. If you would like us to pray for something specific please contact Liz or Jeff (confidentially) - either jervaulxliz@gmail.com or jervaulxjeff@gmail.com or phone 01969 326069

Weddings and Funerals

Weddings are permitted with up to 15 people attending, depending on the building.

Funerals can take place with up to 30 people attending, depending on the building.

Funerals directors have current information.

The Bridge Magazine

We are currently producing a monthly email edition of the Bridge Parish Magazine. If you or someone you know would like to be added to the mailing list, please contact Liz on jervaulxliz@gmail.com

Rectory: 01969 326069 or **Liz,** 07796988302

Jeff, 07443581463

MSCWA – Middleham Sports and Wellbeing Association

Over the past month we have set to and produced an excellent playing surface to enable Leyburn to continue in the Wensleydale Creamery League.

Carperby Football club helped out with things in the interim, but from late August Leyburn were training at Middleham.

So, it was appropriate that the first game was against Carperby in which a keenly contested game resulted in a 3-3 draw following Carperby leading for most of the game.

The 'crowd' numbered over 50, suitably socially distanced around the pitch, (last week away at Hawes -Leyburn won 8-4-there were 28 in appalling conditions overhead and at foot!) and 38 cars!!

Its early days, but Leyburn lie 4th in a division of 11 teams and play Catterick away next week.

The boys refurbished the dugouts, re-painted the old posts we obtained second hand and set up the nets etc. Nigel Hopper and I attended to grass cutting and roping off a new car parking area -much to the surprise of old lags who turned up on Saturday remarking on how well organised it was as opposed to parking virtually anywhere.

A small gathering of 'gentlemen who played in the last games at Middleham' in 2008 were present from when Middleham ended up 3rd in the division and had won the Dales Cup in previous years.

The main expense has been born by MSCWA (Middleham Sports and Community Wellbeing Association) as we can see the investment for future hire of the pitch and use by a Middleham team.

New 'go slow' signs on the lane and direction signs (to come) will also let visitors know where they can exercise.

Richard Fletcher, Secretary MSCWA

Our main contacts are:

Community Garden-contact Nigel or Amanda 07594 814524

Messy boots-Kathy Wheeler 07866 132787

Cricket-Richard Sanderson 01969 625365

5 a side football/Senior

Football/Rounders/Golf-Nigel.

One bad incident occurred recently in which a local military veterans assistance dog was seriously injured by a broken beer bottle left on the field. The response of this community in raising over £300 towards the £600 vets bill was truly impressive and thank you to all who donated. The dog is now recovering well. The critical issue is: **DON'T bring glass bottles onto the field, use cans and plastic, and bin your litter - don't leave it behind.**

The Community Garden or More Kale anyone?

Its been a fantastic growing season. But we are starting to think about putting the garden to bed. Although, while the Helianthus and Asters are still growing strong, and the Californian poppies and Cornflowers are still blooming in the wildflower area next to the shed, we are loathe to cut things back.

My final "Castle Garden" newsletter of the year will be published and available soon.

There have been some really special moments in the garden that I've wanted to record, including a really lively Harvest Thanksgiving Service, thanks to Rev Liz Moody.

We have plans for more planting areas and developing a Boules area, for those of us who take our exercise gently but still want to benefit from being outside. Plans are going to council and there are visuals in the next "Castle Garden."

So happy to have seen families enjoying the garden over the Summer. We politely request visitors to treat the garden with respect and use the litter bins. It was quite upsetting to see the damage caused to Ruth Robert's tree by the family who tied their dog to it.

Anybody who would like to help us with a bit of community gardening do make contact

with us. Jackie, Fran, Nigel and I are always in a better mood after we've had a bit of banter over the flower beds.

Amanda

Messy Boots

Messy Boots, for pre-school children, have restarted, with all appropriate hygiene and distancing measures in place. Come along to the Wild Wood next to the Skate Park and Sports Field every Tuesday afternoon, 1.00 to 3.00pm

Kathy Wheeler 07866132787

From Councillor Lorna Skelton

Dog fouling. This has been a hate of mine for many years and as a new Town Councillor I've realised many more of you agree and feel the same! Why, oh why do people leave their dogs mess behind? Do people not realise the damage this can cause to children? Blindness just being one of them, Outside the primary school is the worst place I've seen it and with a dog bin just by the Key Centre there is no excuse. If you are reported, you can be fined up to £10,000. Canaan's Lane, beside the castle, is disgusting and with a bin at the bottom people are clearly too lazy to walk back down or carry it to the next bin.

We live in a beautiful part of the world with many tourists and day visitors and I do believe they are to be blamed too, but we

have dog bins and are also getting new dispensers with bags in! Will this make any difference? sadly I don't really think it will – please prove me wrong:

BE RESPONSIBLE - PICK IT UP

Regards Lorna

Plantations

We have had some initial conversations with some of those living around the Plantations. We will get some ideas together and then get a questionnaire out during the winter months to look at the possibilities for managing the Plantations and see what people think.

Councillor Greg Fortune

Pinkers Pond Tree Planting

A plan for planting some trees in the areas near Pinkers Pond has been agreed with the council. The areas chosen will enhance the existing land and trees but will also preserve the lovely open views up Coverdale and towards Braithwaite and East Witton. You can help make a positive difference this winter and help enhance the biodiversity of Pinker's Pond and the Low Moor. Lower Wensleydale Biodiversity Action Group are inviting residents to help plant approx 200 native tree species around the Pinker's Pond area to bring additional colour and enrich biodiversity. The trees are being supplied by

The Yorkshire Dales Millennium Trust and will include wild cherry, goat willow, grey willow, rowan, oak, field maples, and dog rose. It is hoped planting will take place in January. If you would like to get involved please email lwbagroup@gmail.com

Many thanks,

Elise and Kayleigh

Racing Welfare

Local family complete Virtual London

Marathon in memory of son, raising funds to support Racing Welfare

Simon Jones has raised almost £20,000 for Racing Welfare since the death of his son Tim, an amateur jockey based with Micky Hammond, who took his own life in 2019. Plans to complete a 200-mile bike ride, departing Cheltenham Racecourse and arriving at Aintree Racecourse's Grand National meeting were unfortunately postponed due to the Covid-19 outbreak.

The family didn't let this stop their fundraising mission however, instead taking on the 26.2 miles of the Virtual London Marathon to further the funds of the Remembering Tim Jones Appeal.

Funds generated from the appeal have gone directly to Racing Welfare in order to help educate those working in racing yards through the delivery of Mental Health First Aid courses. Racing Welfare share the aim of

equipping as many people as possible with the knowledge to be able to identify those who may benefit from support with their mental health and there are currently over 100 people in the industry who have benefitted from the training.

You can find out more about the

Remembering Tim Jones Appeal and support Simon's fundraising efforts by visiting:

<https://www.justgiving.com/fundraising/s-jones38>

Racing Welfare provides a wide range of advice and guidance services, all of which are completely confidential and non-judgmental. Support is available for physical and mental health, bereavement, careers advice, housing, money advice, illness, addiction, relationships and retirement.

All of Racing Welfare's services are accessible 24hrs a day online at

www.racingwelfare.co.uk

Racing's Support Line: 0800 6300 443

Careers Advice and Training Service:

www.cats-racingwelfare.co.uk

Gail Burton-Pye, Welfare Officer, Racing Welfare, tel 07788184140

And now for some Halloween fun!

Halloween Quiz

1. From which region in the world do pumpkins originate?
2. Is a pumpkin a fruit or a vegetable?
3. Halloween has its origins in which ancient Celtic festival?
4. What was the original name for a bonfire?
5. What is the significance of seeing a spider on Halloween?
6. Which Church festival day is Halloween linked to?
7. Out of which vegetable were Jack O' Lanterns originally made?
8. Every Halloween, Charlie Brown helps his friend Linus wait for what character to appear?
9. Who is said to haunt the White House, Washington DC?
10. Pumpkins can be orange, white, green, or what other colour?
11. What two countries are widely credited with originating the idea of wearing costumes on Halloween?
12. According to superstition, a person born on Halloween has what particular ability?
13. The tradition of bobbing for apples is thought to come from celebrating a Roman Goddess, what was her name?

For Quiz Answers, see end of this Herald



Update on offers of help and services from local businesses:

Central Stores, Middleham

For those isolating or housebound, will take orders and deliver locally, free of charge, groceries and other goods. Tel 01969 623224. You may get the answerphone, so leave your name and tel number and they will get back to you.

Andersons Takeaway, Middleham

Tel 01969 629290

Andersons have closed their Takeaway service but they are still providing outside catering and their increasingly popular mobile sandwich delivery service to workplaces around the area.

Fairhursts at Berry's

The café at Berry's is now open from 09.30 to 3.00pm daily. Indoor and outdoor service plus takeaway.

Fairhursts are still offering a main meals delivery service bringing traditional pre-cooked meals to your door. Special diets (gluten free etc) can be catered for. Other groceries can be added to your order from Berry's Farm Shop. Tel 01969 624668

Wensleydale Hotel

Take away menu, home baked bread (Thurs & Sat only) and vegetable boxes. All to pre-order the day before by phone and collect on Thurs – Sun. Menu on Facebook and website and can be delivered on request for those self-isolating. Tel 01969 622093

Yorkshire Dales Meat

Delivering meat, eggs and milk
01748 810042

Leyburn Pets

Delivering pet food and supplies

01969 622953, or mail@leyburnpets.co.uk

Car Servicing, Repairs and MoTs are available from:

R&S Motors, Middleham Road, Leyburn

Tel 01969 624681

and

Middleham Motors, Leyburn Road, Middleham,

tel 01969 623283

R Handley & sons, North Road, Middleham

Tel 01969 623216

Ravensworth Nurseries

Have reopened with strict controls and limited customer numbers, maximum of 2 x people per household, please to reduce waiting times. Open 10.00 am to 3.00 pm daily. Also still delivering plants and gardening supplies.

01325 718370

Braithwaites Nurseries, Leeming Bar

Now open with strict limits to numbers of cars and customers. Open Mon – Fri 08.30 – 5.30 Sat 08.30 – 5.00 and Sun 10.00 – 4.00. If you need to keep minimal contact they recommend you order ahead and then collect your prepared order: enquiries@braithwaitesnursery.co.uk
01677 422861

House & Home, Leyburn

Now open with strictly limited customer numbers and one-way system.

Opening Monday – Saturday 9.00 – 5.00.

Sunday 10.00 – 4.00

Wray's giftware and toys is open Mon - Sat 10.00 – 3.00

Still delivering home fuel, gardening supplies, outdoor maintenance materials. Order by email:

houseandhomeleyburn@gmail.com

or ring them on 01969 625471

Sanderson's Decorating

Delivering decorating supplies and calor gas

01969 623143

Some other local shops and businesses are also offering deliveries or an Order and Collect system, so it's always worth ringing and asking.

Internet and computers

Whilst you are at home, if you would like to make more use of your computer or mobile phone but aren't sure how to do this safely, one useful website recommended by Charlotte Strickland, that takes you through things step by step is:

www.boldnewworld.co.uk/get-connected/

If you are having difficulty with your laptop or pc, contact Ed Davies at ed@builtbyed.co.uk or via Facebook or Instagram.

Who to contact for help or if you are worried for yourself or someone else:

The Town Clerk, David Keep, is working from home, contact him by e-mail:

office@middlehamtowncouncil.co.uk

or tel 07531 580499. This is David's home mobile and he is happy to be contacted outside normal hours.

Councillor Honor Byford, 01969 625304 or 07849 918215. shbyford@yahoo.co.uk

Councillor Nigel Hopper, 07594 814524, hoppn@gmail.com

St Marys & St Alkelda's Church,

Reverends Liz Moody and Jeff Payne

01969 326069 or Liz, 07796 988302

Jeff, 07443 581463

Racing Welfare

Gail Burton-Pye, 07788 184140,

gburtonpye@racingwelfare.co.uk

The Middleham Key Centre office has reopened,

Monday – Thursday mornings 9.00 – 2.00. You

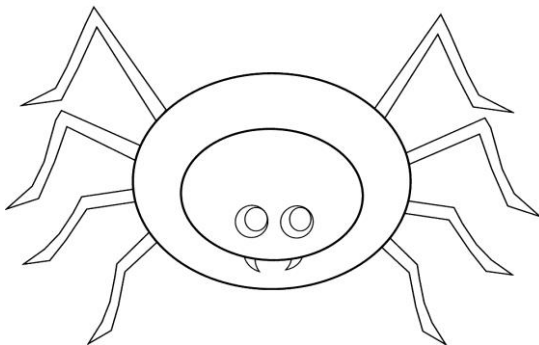
can email us on office@middlehamkey.co.uk or

ring our number 01969 624002 and leave a

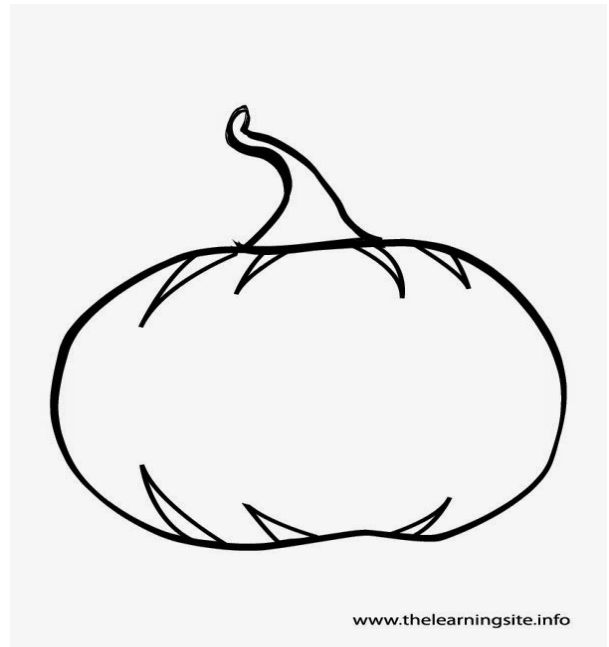
message outside of opening hours. Alternatively,

you can ring Pam on 07772 736006 or Lesley on

01969 622615



1. Central America
2. Fruit
3. Samhain
4. Bone and Fire
5. The spirit of a loved one watching over the finder
6. All Saints Day
7. Turnips
8. The Great Pumpkin
9. President Abraham Lincoln
10. Blue
11. Scotland and Ireland
12. The ability to see and talk to spirits
13. Pomona



www.thelearningsite.info